



[Go to Product page](#)

Datasheet for ABIN1355639

GPR97 Protein (AA 1-549) (GST tag)

1 Image

Overview

Quantity:	10 µg
Target:	GPR97
Protein Characteristics:	AA 1-549
Origin:	Human
Source:	Wheat germ
Protein Type:	Recombinant
Purification tag / Conjugate:	This GPR97 protein is labelled with GST tag.
Application:	ELISA, Western Blotting (WB), Affinity Purification (AP), Antibody Array (AA)

Product Details

Purpose:	GPR97 (Human) Recombinant Protein (P01)
Sequence:	<p>MATPRGLGAL LLLLLLPTSG QEKPTEGPRN TCLGSNNMYD IFNLNDKALC FTKCRQSGSD SCNVENLQRY WLNIEAHLMK EGLTQKVNTF FLKALVQNLN TNTAEDFYFS LEPSQVPRQV MKDEDKPPDR VRLPKSLFRS LPGNRSVRL AVTILDIGPG TLFKGPRLGL GDGSGVLNNR LVGLSVGQMH VTKLAEPLEI VFSHQRPDPN MTLTCVFWDV TKGTTGDWSS EGCSTEVRPE GTVCCCDHLT FFALLRPTL DQSTVHILTR ISQAGCGVSM IFLAFTIILY AFLRLSRERF KSEDAPKIHV ALGGSLFLLN LAFLVNVGSG SKGSDAACWA RGAVFHYFLL CAFTWWMGLEA FHLYLLAVRV FNTYFGHYFL KLSLVGWGLP ALMVIGTGSA NSYGLYTIRD RENRTSLELC WFREGTTMYA LYITVHGYFL ITFLFGMVVL ALVVKIFTL SRATVVKERG KNRKKVLTLL GLSSLVGVTW GLAIFTPLGL STVYIFALFN SLQGVFICCW FTILYLPSQS TTVSSSTARL DQAHSASQE</p>
Characteristics:	Human GPR97 full-length ORF (NP_740746.3, 1 a.a. - 549 a.a.) recombinant protein with GST-

Product Details

tag at N-terminal.

Purification: in vitro wheat germ expression system

Target Details

Target: GPR97

Alternative Name: GPR97 ([GPR97 Products](#))

Background: Full Gene Name: G protein-coupled receptor 97
Synonyms: GPR-97,PGR26,Pb99

Gene ID: 222487

NCBI Accession: [NM_170776](#)

Application Details

Application Notes: Optimal working dilution should be determined by the investigator.

Comment: Preparation method: in vitro, wheat germ expression system
Product Quality tested by: 12.5% SDS-PAGE Stained with Coomassie Blue.

Restrictions: For Research Use only

Handling

Buffer: 50 mM Tris-HCl, 10 mM reduced Glutathione, pH =8.0 in the elution buffer.

Handling Advice: Aliquot to avoid repeated freezing and thawing.

Storage: -80 °C

Storage Comment: Best use within three months from the date of receipt of this protein.

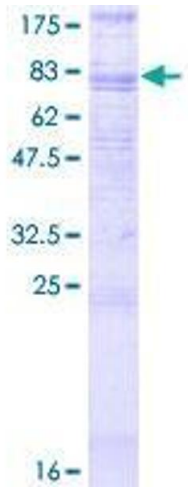


Image 1.