



[Go to Product page](#)

Datasheet for ABIN135564  
**anti-MHC, Class I antibody (FITC)**

1 Image

### Overview

Quantity:	0.5 mg
Target:	MHC, Class I
Reactivity:	Chicken
Host:	Mouse
Clonality:	Monoclonal
Conjugate:	This MHC, Class I antibody is conjugated to FITC
Application:	Flow Cytometry (FACS), Immunohistochemistry (IHC)

### Product Details

Immunogen:	Unknown
Clone:	F21-2
Isotype:	IgG1
Specificity:	Chicken/Turkey MHC Class I $\alpha$ -chain, Mr 40-43 kDa
Characteristics:	Mouse Anti-Chicken MHC Class I-FITC
Purification:	The antibody is affinity-purified from rabbit antiserum by affinity chromatography using epitope-specific phosphopeptide. The antibody against non-phosphopeptide is removed by chromatography using non-phosphopeptide corresponding to the phosphorylation site.

### Target Details

Target:	MHC, Class I
---------	--------------

## Target Details

---

Alternative Name: MHC Class I ([MHC, Class I Products](#))

## Application Details

---

Application Notes: Working Dilution:  
FACS: 1 µg/10<sup>6</sup> cells  
Representative data are included in this product insert.

Each laboratory should determine an optimum working titer for use in its particular application. Other applications have not been tested but use in such assays should not necessarily be excluded.

Comment: Immunoaffinity chromatography

Sample Volume: 1 mL

Restrictions: For Research Use only

## Handling

---

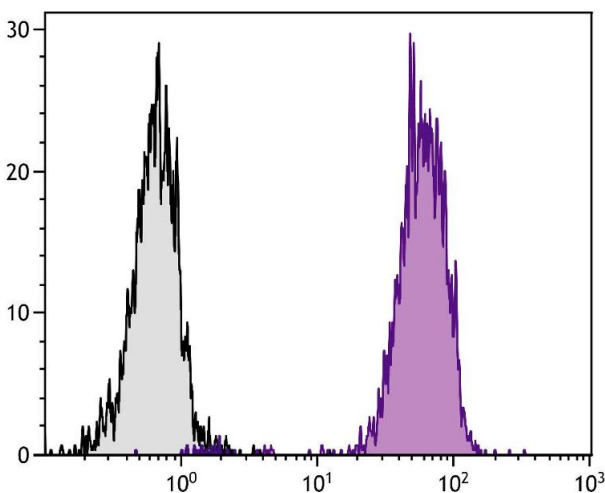
Buffer: Product is supplied as 0.5 mg in 1.0 mL of PBS / NaN<sub>3</sub>.

Handling Advice: **Protect conjugated products from light.**  
Each reagent is stable for the period shown on the bottle label if stored as directed.

Storage: 4 °C

## Images

---



### Flow Cytometry

**Image 1.** Chicken peripheral blood lymphocytes were stained with Mouse Anti-Chicken MHC Class I-FITC.