

Datasheet for ABIN135567  
**anti-MHC Class II antibody**[Go to Product page](#)

1 Image

1 Publication

## Overview

Quantity:	0.5 mg
Target:	MHC Class II (MHC2)
Reactivity:	Chicken
Host:	Mouse
Clonality:	Monoclonal
Conjugate:	This MHC Class II antibody is un-conjugated
Application:	Flow Cytometry (FACS)

## Product Details

Immunogen:	Unknown
Clone:	2G11
Isotype:	IgG1
Specificity:	Chicken/Pigeon/Caiman MHC Class II $\beta$ -chain, Mr 30-42 kDa
Characteristics:	Mouse Anti-Chicken MHC Class II-UNLB
Purification:	Purified

## Target Details

Target:	MHC Class II (MHC2)
Alternative Name:	MHC Class II ( <a href="#">MHC2 Products</a> )
Background:	The chicken major histocompatibility complex (MHC), or B complex, consists of several

## Target Details

clusters of highly polymorphic genes. Like their mammalian counterparts, the avian MHC exerts genetic influence over a variety of important biological functions such as immune response, disease resistance, growth and development, aging, and reproduction. Chicken MHC Class II genes, also known as the B-L subregion, of the chicken MHC encode cell surface glycoproteins that are homologous to mammalian Class II antigens. B-L antigens structurally are similar to mammalian Class II molecules in that they are noncovalently bound dimers of one 32-34 kDa heavy chain and one 27-30 kDa light chain. MHC Class II is primarily expressed on B cells and antigen presenting cells (APCs).

## Application Details

Application Notes:	<ul style="list-style-type: none"><li>• <b>Applications:</b> FC - Quality tested , IHC-FS - Reported in literature , EM - Reported in literature , IP - Reported in literature , Purification - Reported in literature</li><li>• <b>Working Dilutions:</b> Flow Cytometry Purified (UNLB) antibody 1 g/106 cells FITC, BIOT, and AF488 conjugates 1 g/106 cells PE conjugate 0.2 g/106 cells For flow cytometry, the suggested use of these reagents is in a final volume of 100 L</li></ul>
--------------------	--

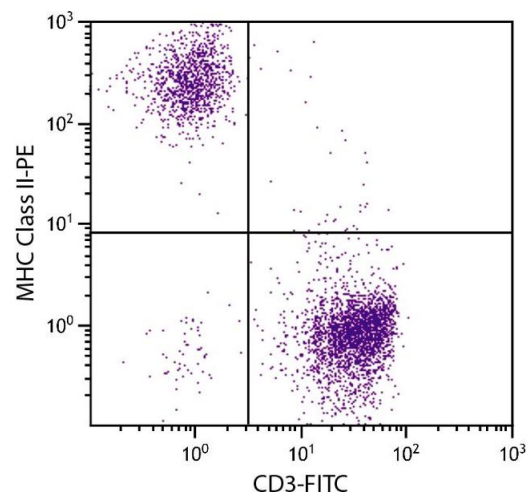
Sample Volume:	1 mL
Restrictions:	For Research Use only

## Handling

Concentration:	0.5 mg/mL
Buffer:	0.5 mg of purified immunoglobulin in 1.0 mL of borate buffered saline, pH 8.2. No preservatives or amine-containing buffer salts added
Preservative:	Without preservative
Handling Advice:	Each reagent is stable for the period shown on the bottle label if stored as directed.
Storage:	4 °C
Storage Comment:	Store at 2-8°C

## Publications

Product cited in:	Roos Ljungberg, Börjesson, Martinsson, Wetterö, Kastbom, Svärd: "Presence of salivary IgA anti-citrullinated protein antibodies associate with higher disease activity in patients with rheumatoid arthritis." in: <b>Arthritis research &amp; therapy</b> , Vol. 22, Issue 1, pp. 274, (2021) ( <a href="#">PubMed</a> ).
-------------------	--



Flow Cytometry

**Image 1.** Chicken peripheral blood lymphocytes were stained with Mouse Anti-Chicken MHC Class II-PE.