



[Go to Product page](#)

Datasheet for ABIN1355670

GPSM3 Protein (AA 1-160) (GST tag)

1 Image

Overview

Quantity:	10 µg
Target:	GPSM3
Protein Characteristics:	AA 1-160
Origin:	Human
Source:	Wheat germ
Protein Type:	Recombinant
Purification tag / Conjugate:	This GPSM3 protein is labelled with GST tag.
Application:	ELISA, Western Blotting (WB), Antibody Array (AA), Affinity Purification (AP)

Product Details

Purpose:	GPSM3 (Human) Recombinant Protein (P01)
Sequence:	MEAERPQEEE DGEQGPPQDE EGWPPPNSTT RPWRSAPPSP PPPGTRHTAL GPRSASLLSL QTELLLDLVA EAQSRRLLEEQ RATFYTPQNP SSLAPAPLRP LEDREQLYST ILSHQQRME AQRSEPPLPP GGQELLELLL RVQGGGRMEE QRSRPPTHTC
Characteristics:	Human GPSM3 full-length ORF (AAH18724, 1 a.a. - 160 a.a.) recombinant protein with GST-tag at N-terminal.
Purification:	in vitro wheat germ expression system

Target Details

Target:	GPSM3
Alternative Name:	GPSM3 (GPSM3 Products)

Target Details

Background:	Full Gene Name: G-protein signaling modulator 3 (AGS3-like, <i>C. elegans</i>) Synonyms: C6orf9,G18,G18.1a,G18.1b,G18.2,NG1
Gene ID:	63940

Application Details

Application Notes:	Optimal working dilution should be determined by the investigator.
Comment:	Preparation method: in vitro, wheat germ expression system Product Quality tested by: 12.5% SDS-PAGE Stained with Coomassie Blue.
Restrictions:	For Research Use only

Handling

Buffer:	50 mM Tris-HCl, 10 mM reduced Glutathione, pH =8.0 in the elution buffer.
Handling Advice:	Aliquot to avoid repeated freezing and thawing.
Storage:	-80 °C
Storage Comment:	Best use within three months from the date of receipt of this protein.

Images

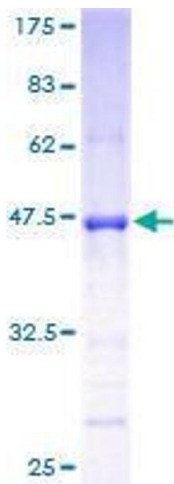


Image 1.