



[Go to Product page](#)

Datasheet for ABIN1355687

## GPX8 Protein (AA 1-209) (GST tag)

### 1 Image

#### Overview

Quantity:	25 µg
Target:	GPX8
Protein Characteristics:	AA 1-209
Origin:	Human
Source:	Wheat germ
Protein Type:	Recombinant
Purification tag / Conjugate:	This GPX8 protein is labelled with GST tag.
Application:	ELISA, Western Blotting (WB), Antibody Array (AA), Affinity Purification (AP)

#### Product Details

Purpose:	GPX8 (Human) Recombinant Protein (P01)
Sequence:	MEPLAAYPLK CSGPRAKVFA VLLSIVLCTV TLFLLQLKFL KPKINSFYAF EVKDAKGRTV SLEKYKGVKS LVVNVASDCQ LTDRNYLGLK ELHKEFGPSH FSVLAFPCNQ FGESEPRPSK EVESFARKNY GVTFFPIFHKI KILGSEGEPA FRFLVDSSKK EPRWNFWKYL VNPEGQVVKF WRPEEPIEVI RPDIAALVRQ VIKKKEDL
Characteristics:	Human GPX8 full-length ORF ( NP_001008398.1, 1 a.a. - 209 a.a.) recombinant protein with GST-tag at N-terminal.
Purification:	in vitro wheat germ expression system

#### Target Details

Target:	GPX8
---------	------

## Target Details

Alternative Name:	GPX8 ( <a href="#">GPX8 Products</a> )
Target Type:	Viral Protein
Background:	Full Gene Name: glutathione peroxidase 8 (putative) Synonyms: UNQ847
Gene ID:	493869
NCBI Accession:	<a href="#">NM_001008397</a>
Pathways:	<a href="#">Thyroid Hormone Synthesis</a>

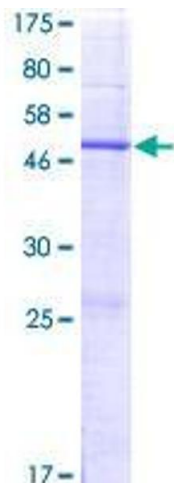
## Application Details

Application Notes:	Optimal working dilution should be determined by the investigator.
Comment:	Preparation method: in vitro, wheat germ expression system Product Quality tested by: 12.5% SDS-PAGE Stained with Coomassie Blue.
Restrictions:	For Research Use only

## Handling

Buffer:	50 mM Tris-HCl, 10 mM reduced Glutathione, pH =8.0 in the elution buffer.
Handling Advice:	Aliquot to avoid repeated freezing and thawing.
Storage:	-80 °C
Storage Comment:	Best use within three months from the date of receipt of this protein.

## Images



**Image 1.**