



[Go to Product page](#)

Datasheet for ABIN1355692

GRAP2 Protein (AA 1-330) (GST tag)

1 Image

Overview

Quantity:	10 µg
Target:	GRAP2
Protein Characteristics:	AA 1-330
Origin:	Human
Source:	Wheat germ
Protein Type:	Recombinant
Purification tag / Conjugate:	This GRAP2 protein is labelled with GST tag.
Application:	Western Blotting (WB), ELISA, Antibody Array (AA), Affinity Purification (AP)

Product Details

Purpose:	GRAP2 (Human) Recombinant Protein (P01)
Sequence:	MEAVAKFDFT ASGEDELSFH TGDVLKILSN QEEWFKAELG SQEGYVPKNF IDIQFPKWFH EGLSRHQAEN LLMGKEVGFF IIRASQSSPG DFSISVRHED DVQHFVKMRD NKGNYFLWTE KFPSLNKLVD YYRTNSISRQ KQIFLRDRTR EDQGHGRNSL DRRSQGGPHL SGAVGEEIRP SMNRKLSDHP PTLPLQQHQH QPQPPQYAPA PQLLQPPQQ RYLQHHHFHQ ERRGGSLDIN DGHCGTGLGS EMNAALMHRH HTDPVQLQAA GRVRWARALY DFEALEDDEL GFHSGEVVEV LDSSNPSWWT GRLHNKLGLF PANYVAPMTR
Characteristics:	Human GRAP2 full-length ORF (NP_004801.1, 1 a.a. - 330 a.a.) recombinant protein with GST-tag at N-terminal.
Purification:	in vitro wheat germ expression system

Target Details

Target:	GRAP2
Alternative Name:	GRAP2 (GRAP2 Products)
Background:	Full Gene Name: GRB2-related adaptor protein 2 Synonyms: GADS,GRAP-2,GRB2L,GRBLG,GRID,GRPL,GrbX,Grf40,Mona,P38
Gene ID:	9402
NCBI Accession:	NM_004810
Pathways:	TCR Signaling , Fc-epsilon Receptor Signaling Pathway

Application Details

Application Notes:	Optimal working dilution should be determined by the investigator.
Comment:	Preparation method: in vitro, wheat germ expression system Product Quality tested by: 12.5% SDS-PAGE Stained with Coomassie Blue.
Restrictions:	For Research Use only

Handling

Buffer:	50 mM Tris-HCl, 10 mM reduced Glutathione, pH =8.0 in the elution buffer.
Handling Advice:	Aliquot to avoid repeated freezing and thawing.
Storage:	-80 °C
Storage Comment:	Best use within three months from the date of receipt of this protein.

Images

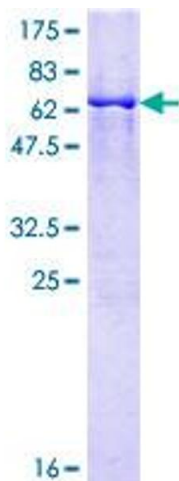


Image 1.