



[Go to Product page](#)

Datasheet for ABIN1355718

## GRHL2 Protein (AA 111-210) (GST tag)

### 1 Image

#### Overview

Quantity:	10 µg
Target:	GRHL2
Protein Characteristics:	AA 111-210
Origin:	Human
Source:	Wheat germ
Protein Type:	Recombinant
Purification tag / Conjugate:	This GRHL2 protein is labelled with GST tag.
Application:	ELISA, Western Blotting (WB), Antibody Array (AA), Affinity Purification (AP)

#### Product Details

Purpose:	TFCP2L3 (Human) Recombinant Protein (Q01)
Sequence:	ENRVQLKTV PVNLSLNQDH LENSUREQYS ISFPESSAII PVSGITVVKA EDFTPVFMAP PVHYPRGDGE EQRVVIFEQT QYDVPSLATH SAYLKDDQRS
Characteristics:	Human TFCP2L3 partial ORF ( NP_079191, 111 a.a. - 210 a.a.) recombinant protein with GST-tag at N-terminal.
Purification:	in vitro wheat germ expression system

#### Target Details

Target:	GRHL2
Alternative Name:	GRHL2 ( <a href="#">GRHL2 Products</a> )

## Target Details

Background:	Full Gene Name: grainyhead-like 2 (Drosophila) Synonyms: BOM,DFNA28,FLJ11172,FLJ13782,MGC149294,MGC149295,TFCP2L3
Gene ID:	79977
NCBI Accession:	<a href="#">NM_024915</a>
Pathways:	<a href="#">Tube Formation</a>

## Application Details

Application Notes:	Optimal working dilution should be determined by the investigator.
Comment:	Preparation method: in vitro, wheat germ expression system Product Quality tested by: 12.5% SDS-PAGE Stained with Coomassie Blue.
Restrictions:	For Research Use only

## Handling

Buffer:	50 mM Tris-HCl, 10 mM reduced Glutathione, pH =8.0 in the elution buffer.
Handling Advice:	Aliquot to avoid repeated freezing and thawing.
Storage:	-80 °C
Storage Comment:	Best use within three months from the date of receipt of this protein.

## Images

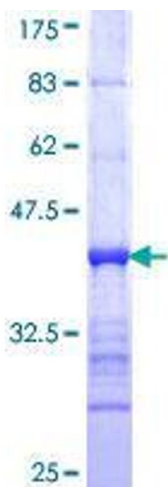


Image 1.