

Datasheet for ABIN1355724

Glutamate Receptor 1 Protein (GLUR1) (AA 201-300) (GST tag)



[Go to Product page](#)

1 Image

Overview

Quantity:	10 µg
Target:	Glutamate Receptor 1 (GLUR1)
Protein Characteristics:	AA 201-300
Origin:	Human
Source:	Wheat germ
Protein Type:	Recombinant
Purification tag / Conjugate:	This Glutamate Receptor 1 protein is labelled with GST tag.
Application:	Western Blotting (WB), ELISA, Antibody Array (AA), Affinity Purification (AP)

Product Details

Purpose:	GRIA1 (Human) Recombinant Protein (Q01)
Sequence:	VVDCESERLN AILGQIIKLE KNGIGYHYIL ANLGFMDIDL NKFKESGANV TGFQLVNYTD TIPAKIMQQW KNSDARDHTR VDWKRPKYTS ALTYDGVKVM
Characteristics:	Human GRIA1 partial ORF (NP_000818, 201 a.a. - 300 a.a.) recombinant protein with GST-tag at N-terminal.
Purification:	in vitro wheat germ expression system

Target Details

Target:	Glutamate Receptor 1 (GLUR1)
Alternative Name:	GRIA1 (GLUR1 Products)

Target Details

Background:	Full Gene Name: glutamate receptor, ionotropic, AMPA 1 Synonyms: GLUH1, GLUR1, GLURA, HBGR1, MGC133252
Gene ID:	2890
NCBI Accession:	NM_000827
Pathways:	PI3K-Akt Signaling

Application Details

Application Notes:	Optimal working dilution should be determined by the investigator.
Comment:	Preparation method: in vitro, wheat germ expression system Product Quality tested by: 12.5% SDS-PAGE Stained with Coomassie Blue.
Restrictions:	For Research Use only

Handling

Buffer:	50 mM Tris-HCl, 10 mM reduced Glutathione, pH =8.0 in the elution buffer.
Handling Advice:	Aliquot to avoid repeated freezing and thawing.
Storage:	-80 °C
Storage Comment:	Best use within three months from the date of receipt of this protein.

Images

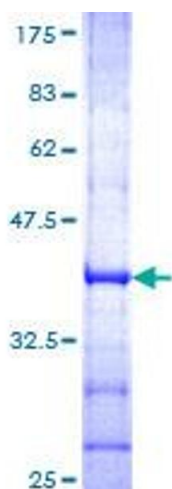


Image 1.