

Datasheet for ABIN1355746

## GRIN1/NMDAR1 Protein (AA 21-120) (GST tag)



[Go to Product page](#)

### 1 Image

#### Overview

Quantity:	10 µg
Target:	GRIN1/NMDAR1 (GRIN1)
Protein Characteristics:	AA 21-120
Origin:	Human
Source:	Wheat germ
Protein Type:	Recombinant
Purification tag / Conjugate:	This GRIN1/NMDAR1 protein is labelled with GST tag.
Application:	Western Blotting (WB), ELISA, Affinity Purification (AP), Antibody Array (AA)

#### Product Details

Purpose:	GRIN1 (Human) Recombinant Protein (Q01)
Sequence:	ACDPKIVNIG AVLSTRKHEQ MFREAVNQAN KRHGSWKIQL NATSVTHKPN AIQMALSVCE DLISSQVYAI LVSHPTTPND HFTPTVSYT AGFYRIPVLG
Characteristics:	Human GRIN1 partial ORF ( NP_015566, 21 a.a. - 120 a.a.) recombinant protein with GST-tag at N-terminal.
Purification:	in vitro wheat germ expression system

#### Target Details

Target:	GRIN1/NMDAR1 (GRIN1)
Alternative Name:	GRIN1 ( <a href="#">GRIN1 Products</a> )

## Target Details

---

Background: Full Gene Name: glutamate receptor, ionotropic, N-methyl D-aspartate 1  
Synonyms: NMDA1,NMDAR1,NR1

---

Gene ID: 2902

---

NCBI Accession: [NM\\_007327](#)

---

Pathways: [Synaptic Membrane](#), [Feeding Behaviour](#), [Regulation of long-term Neuronal Synaptic Plasticity](#)

---

## Application Details

---

Application Notes: Optimal working dilution should be determined by the investigator.

---

Comment: Preparation method: in vitro, wheat germ expression system  
Product Quality tested by: 12.5% SDS-PAGE Stained with Coomassie Blue.

---

Restrictions: For Research Use only

---

## Handling

---

Buffer: 50 mM Tris-HCl, 10 mM reduced Glutathione, pH =8.0 in the elution buffer.

---

Handling Advice: Aliquot to avoid repeated freezing and thawing.

---

Storage: -80 °C

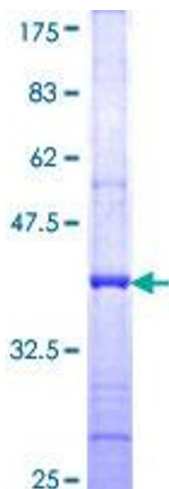
---

Storage Comment: Best use within three months from the date of receipt of this protein.

---

## Images

---



**Image 1.**