



[Go to Product page](#)

Datasheet for ABIN1355750

GRIN2C Protein (AA 1-171) (GST tag)

1 Image

Overview

Quantity:	10 µg
Target:	GRIN2C
Protein Characteristics:	AA 1-171
Origin:	Human
Source:	Wheat germ
Protein Type:	Recombinant
Purification tag / Conjugate:	This GRIN2C protein is labelled with GST tag.
Application:	Western Blotting (WB), ELISA, Antibody Array (AA), Affinity Purification (AP)

Product Details

Purpose:	GRIN2C (Human) Recombinant Protein (P01)
Sequence:	MGGALGPALL LTSLFGAWAG LGPGQGEQGM TVAVVFSSSG PPQAQFRARL TPQSFLDLPL EIQPLTVGVN TTNPSSLLTQ ICGLLGAAHV HGIVFEDNVD TEAVAQILDF ISSQTHVPIL SISGGSAVVL TPKVHVQTHV PSCLRPGTRL GSGVLWFWEA GIRRDGQGGG G
Characteristics:	Human GRIN2C full-length ORF (AAH59384.1, 1 a.a. - 171 a.a.) recombinant protein with GST-tag at N-terminal.
Purification:	in vitro wheat germ expression system

Target Details

Target:	GRIN2C
Alternative Name:	GRIN2C (GRIN2C Products)

Target Details

Background:	Full Gene Name: glutamate receptor, ionotropic, N-methyl D-aspartate 2C Synonyms: NMDAR2C, NR2C
Gene ID:	2905
Pathways:	Synaptic Membrane

Application Details

Application Notes:	Optimal working dilution should be determined by the investigator.
Comment:	Preparation method: in vitro, wheat germ expression system Product Quality tested by: 12.5% SDS-PAGE Stained with Coomassie Blue.
Restrictions:	For Research Use only

Handling

Buffer:	50 mM Tris-HCl, 10 mM reduced Glutathione, pH =8.0 in the elution buffer.
Handling Advice:	Aliquot to avoid repeated freezing and thawing.
Storage:	-80 °C
Storage Comment:	Best use within three months from the date of receipt of this protein.

Images

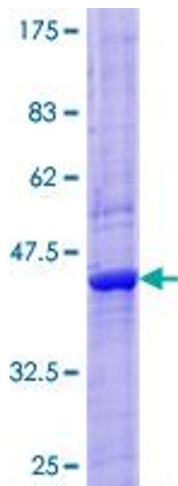


Image 1.