



[Go to Product page](#)

Datasheet for ABIN1355752

POLR2M Protein (AA 1-368) (GST tag)

1 Image

Overview

Quantity:	10 µg
Target:	POLR2M (GRINL1A)
Protein Characteristics:	AA 1-368
Origin:	Human
Source:	Wheat germ
Protein Type:	Recombinant
Purification tag / Conjugate:	This POLR2M protein is labelled with GST tag.
Application:	ELISA, Western Blotting (WB), Antibody Array (AA), Affinity Purification (AP)

Product Details

Purpose:	GRINL1A (Human) Recombinant Protein (P01)
Sequence:	<p>MCSLPRGFEP QAPEDLAQRS LEVELREMLKR QERLLRNEKF ICKLPDKGKK IFDSFAKLKA AIAECEEVRR KSELFNPVSL DCKLRQKAIA EVDVGTDKAQ NSDPILDTSS LVPGCSSVDN IKSSQTSQNG GLGRPTLEGD EETSEVEYTV NKGPASSNRD RVPPSSEASE HHPRHVRVSSQ AEDTSSSF DN LFIDRLQRIT IADQGEQQSE ENASTKNLTG LSSGTEKKPH YMEVLEMRAK NPVPQLRKFK TNVLPFRQND SSSHCQKSGS PISSEERRRR DKQHLDDITA ARLLPLHHMP TQLLSIEESL ALQKQKQNY EEMQAKLAAQ KLAERLNIK M RSYNPEGESS GRVREVRDED DDWSSDEF</p>
Characteristics:	Human GRINL1A full-length ORF (NP_056347.1, 1 a.a. - 368 a.a.) recombinant protein with GST-tag at N-terminal.
Purification:	in vitro wheat germ expression system

Target Details

Target:	POLR2M (GRINL1A)
Alternative Name:	GRINL1A (GRINL1A Products)
Background:	Full Gene Name: glutamate receptor, ionotropic, N-methyl D-aspartate-like 1A Synonyms: DKFZp586F1918
Gene ID:	81488
NCBI Accession:	NM_015532

Application Details

Application Notes:	Optimal working dilution should be determined by the investigator.
Comment:	Preparation method: in vitro, wheat germ expression system Product Quality tested by: 12.5% SDS-PAGE Stained with Coomassie Blue.
Restrictions:	For Research Use only

Handling

Buffer:	50 mM Tris-HCl, 10 mM reduced Glutathione, pH =8.0 in the elution buffer.
Handling Advice:	Aliquot to avoid repeated freezing and thawing.
Storage:	-80 °C
Storage Comment:	Best use within three months from the date of receipt of this protein.

Images

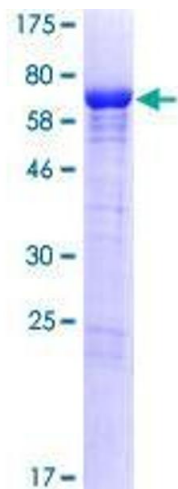


Image 1.