



[Go to Product page](#)

Datasheet for ABIN135578  
**anti-BU-1A / B6.1 antibody**

1 Image

### Overview

Quantity:	0.5 mg
Target:	BU-1A / B6.1
Reactivity:	Chicken
Host:	Mouse
Clonality:	Monoclonal
Conjugate:	This BU-1A / B6.1 antibody is un-conjugated
Application:	Flow Cytometry (FACS)

### Product Details

Immunogen:	Bursa cells from one-day-old H.B15 (Bu-1a/b) strain chickens
Clone:	21-1A4
Isotype:	IgG1
Specificity:	Chicken Bu-1a, Mr 64 kDa
Characteristics:	Mouse Anti-Chicken Bu-1a-UNLB
Purification:	Purified

### Target Details

Target:	BU-1A / B6.1
Alternative Name:	Bu-1a ( <a href="#">BU-1A / B6.1 Products</a> )
Background:	Chicken Bu-1a, a product of the Bu-1a allele, is expressed on the cell surface as a disulfide-

## Target Details

---

linked homodimer. In 10-week-old H.B15 and H.B2 chickens, Bu-1 is found on 85-90 % of bursal cells, 2-8 % of thymocytes, 15-27 % of spleen cells, and 2-18 % of peripheral blood cells. It is also expressed on subsets of macrophages and monocytes, but not on granulocytes, erythrocytes or thrombocytes. In chickens heterozygous for the Bu-1 alleles (Bu-1a/b), Bu-1a does not exhibit allelic exclusion.

## Application Details

---

Application Notes:

- **Applications:** FC - Quality tested , IHC-FS - Reported in literature , ICC - Reported in literature , IP - Reported in literature , Apop - Reported in literature
- **Working Dilutions:** Flow Cytometry Purified (UNLB) antibody 1 g/106 cells FITC and BIOT conjugates 1 g/106 cells PE conjugates 0.2 g/106 cells For flow cytometry, the suggested use of these reagents is in a final volume of 100 L

---

Sample Volume: 1 mL

---

Restrictions: For Research Use only

## Handling

---

---

Concentration: 0.5 mg/mL

---

Buffer: 0.5 mg of purified immunoglobulin in 1.0 mL of borate buffered saline, pH 8.2. No preservatives or amine-containing buffer salts added

---

Preservative: Without preservative

---

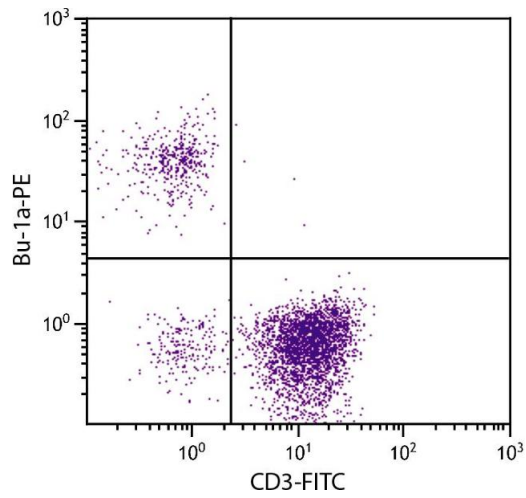
Handling Advice: Each reagent is stable for the period shown on the bottle label if stored as directed.

---

Storage: 4 °C

---

Storage Comment: Store at 2-8°C



### Flow Cytometry

**Image 1.** Chicken peripheral blood lymphocytes were stained with Mouse Anti-Chicken Bu-1a-PE.