



[Go to Product page](#)

Datasheet for ABIN1355801

## GRPEL2 Protein (AA 1-225) (GST tag)

### 1 Image

#### Overview

Quantity:	10 µg
Target:	GRPEL2
Protein Characteristics:	AA 1-225
Origin:	Human
Source:	Wheat germ
Protein Type:	Recombinant
Purification tag / Conjugate:	This GRPEL2 protein is labelled with GST tag.
Application:	ELISA, Western Blotting (WB), Antibody Array (AA), Affinity Purification (AP)

#### Product Details

Purpose:	GRPEL2 (Human) Recombinant Protein (P01)
Sequence:	MAVRSLWAGR LRVQRLAWS AAWESKGWPL PFSTATQRTA GEDCRSEDPP DELGPPLAER ALRVKAVKLE KEVQDLTVRY QRAIADCENI RRRQRCVED AKIFGIQSFC KDLVEVADIL EKTTECISEE SEPEDQKLTL EKVFRGLLLL EAKLKSVFAK HGLEKLTPIG DKYDPHEHEL ICHVPAGVGV QPGTVALVRQ DGYKLHGRTI RLARVEVAVE SQRRL
Characteristics:	Human GRPEL2 full-length ORF ( NP_689620.2, 1 a.a. - 225 a.a.) recombinant protein with GST-tag at N-terminal.
Purification:	in vitro wheat germ expression system

#### Target Details

Target:	GRPEL2
---------	--------

## Target Details

Alternative Name:	GRPEL2 ( <a href="#">GRPEL2 Products</a> )
Background:	Full Gene Name: GrpE-like 2, mitochondrial (E. coli) Synonyms: DKFZp451C205,FLJ23713,FLJ33918,Mt-GrpE#2
Gene ID:	134266
NCBI Accession:	<a href="#">NM_152407</a>

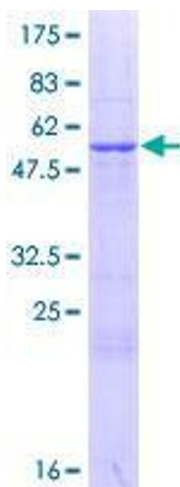
## Application Details

Application Notes:	Optimal working dilution should be determined by the investigator.
Comment:	Preparation method: in vitro, wheat germ expression system Product Quality tested by: 12.5% SDS-PAGE Stained with Coomassie Blue.
Restrictions:	For Research Use only

## Handling

Buffer:	50 mM Tris-HCl, 10 mM reduced Glutathione, pH =8.0 in the elution buffer.
Handling Advice:	Aliquot to avoid repeated freezing and thawing.
Storage:	-80 °C
Storage Comment:	Best use within three months from the date of receipt of this protein.

## Images



**Image 1.**