

Datasheet for ABIN135584  
**anti-Bu-1b antibody (Biotin)**



[Go to Product page](#)

1 Image

## Overview

|              |   |
|--------------|---|
| Quantity:    | 0.5 mg                                      |
| Target:      | Bu-1b                                       |
| Reactivity:  | Chicken                                     |
| Host:        | Mouse                                       |
| Clonality:   | Monoclonal                                  |
| Conjugate:   | This Bu-1b antibody is conjugated to Biotin |
| Application: | Flow Cytometry (FACS)                       |

## Product Details

|                  |  |
|------------------|--|
| Immunogen:       | Bursa cells from two- to five-week-old CHA (Bu-1b) strain chickens |
| Clone:           | 5-11G2   |
| Isotype:         | IgG1   |
| Specificity:     | Chicken Bu-1b, Mr 70 kDa   |
| Characteristics: | Mouse Anti-Chicken Bu-1b-BIOT                                      |

## Target Details

|                   |  |
|-------------------|--|
| Target:           | Bu-1b  |
| Alternative Name: | Bu-1b ( <a href="#">Bu-1b Products</a> )   |
| Background:       | Chicken Bu-1b, a product of the Bu-1b allele, is expressed on the cell surface as a disulfide-linked homodimer. In 10-week-old H.B15 and H.B2 chickens, Bu-1 is found on 85-90 % of bursal |

## Target Details

---

cells, 2-8 % of thymocytes, 15-27 % of spleen cells, and 2-18 % of peripheral blood cells. It is also expressed on subsets of macrophages and monocytes, but not on granulocytes, erythrocytes or thrombocytes. In chickens heterozygous for the Bu-1 alleles (Bu-1a/b), Bu-1a does not exhibit allelic exclusion.

## Application Details

---

Application Notes:

- **Applications:** FC - Quality tested , IHC-FS - Reported in literature , ICC - Reported in literature , IP - Reported in literature , Apop - Reported in literature
- **Working Dilutions:** Flow Cytometry Purified (UNLB) antibody 1 g/106 cells FITC and BIOT conjugates 1 g/106 cells PE conjugates 0.2 g/106 cells For flow cytometry, the suggested use of these reagents is in a final volume of 100 L

---

Sample Volume: 1 mL

---

Restrictions: For Research Use only

## Handling

---

Concentration: 0.5 mg/mL

---

Buffer: 0.5 mg in 1.0 mL of PBS/Sodium azide

---

Preservative: Sodium azide

---

Precaution of Use: This product contains Sodium azide: a POISONOUS AND HAZARDOUS SUBSTANCE which should be handled by trained staff only.

---

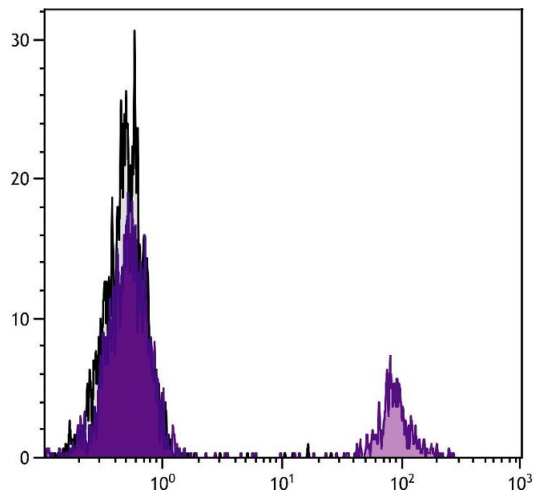
Handling Advice: **Protect conjugated products from light.**  
Each reagent is stable for the period shown on the bottle label if stored as directed.

---

Storage: 4 °C

---

Storage Comment: Store at 2-8°C



### Flow Cytometry

**Image 1.** Chicken peripheral blood lymphocytes were stained with Mouse Anti-Chicken Bu-1b-UNLB.