



[Go to Product page](#)

Datasheet for ABIN135585  
**anti-Bu-1b antibody (PE)**

1 Image

### Overview

Quantity:	0.1 mg
Target:	Bu-1b
Reactivity:	Chicken
Host:	Mouse
Clonality:	Monoclonal
Conjugate:	This Bu-1b antibody is conjugated to PE
Application:	Flow Cytometry (FACS)

### Product Details

Immunogen:	Bursa cells from two- to five-week-old CHA (Bu-1b) strain chickens
Clone:	5-11G2
Isotype:	IgG1
Specificity:	Chicken Bu-1b, Mr 70 kDa
Characteristics:	Mouse Anti-Chicken Bu-1b-PE

### Target Details

Target:	Bu-1b
Alternative Name:	Bu-1b ( <a href="#">Bu-1b Products</a> )
Background:	Chicken Bu-1b, a product of the Bu-1b allele, is expressed on the cell surface as a disulfide-linked homodimer. In 10-week-old H.B15 and H.B2 chickens, Bu-1 is found on 85-90 % of bursal

## Target Details

---

cells, 2-8 % of thymocytes, 15-27 % of spleen cells, and 2-18 % of peripheral blood cells. It is also expressed on subsets of macrophages and monocytes, but not on granulocytes, erythrocytes or thrombocytes. In chickens heterozygous for the Bu-1 alleles (Bu-1a/b), Bu-1a does not exhibit allelic exclusion.

## Application Details

---

Application Notes:

- **Applications:** FC - Quality tested , IHC-FS - Reported in literature , ICC - Reported in literature , IP - Reported in literature , Apop - Reported in literature
- **Working Dilutions:** Flow Cytometry Purified (UNLB) antibody 1 g/106 cells FITC and BIOT conjugates 1 g/106 cells PE conjugates 0.2 g/106 cells For flow cytometry, the suggested use of these reagents is in a final volume of 100 L

---

Sample Volume: 1 mL

---

Restrictions: For Research Use only

## Handling

---

Concentration: 0.1 mg/mL

---

Buffer: 0.1 mg in 1.0 mL of PBS/Sodium azide and a stabilizing agent

---

Preservative: Sodium azide

---

Precaution of Use: This product contains Sodium azide: a POISONOUS AND HAZARDOUS SUBSTANCE which should be handled by trained staff only.

---

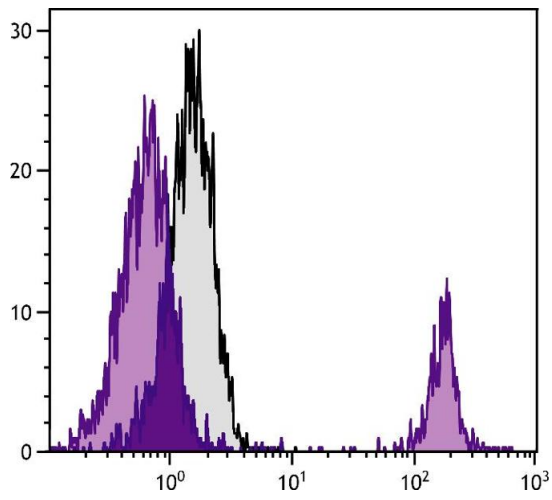
Handling Advice: **Do not freeze!**  
**Protect conjugated products from light.**  
Each reagent is stable for the period shown on the bottle label if stored as directed.

---

Storage: 4 °C

---

Storage Comment: Store at 2-8°C



### Flow Cytometry

**Image 1.** Chicken peripheral blood lymphocytes were stained with Mouse Anti-Chicken Bu-1b-PE.