



[Go to Product page](#)

Datasheet for ABIN135597
anti-Bu-1 antibody (PE)

1 Image

Overview

Quantity:	0.1 mg
Target:	Bu-1
Reactivity:	Chicken
Host:	Mouse
Clonality:	Monoclonal
Conjugate:	This Bu-1 antibody is conjugated to PE
Application:	Flow Cytometry (FACS)

Product Details

Immunogen:	Chicken peripheral blood lymphocytes and splenocytes
Clone:	AV20
Isotype:	IgG1
Specificity:	Chicken Bu-1, Mr 70 kDa
Characteristics:	Mouse Anti-Chicken Bu-1-PE

Target Details

Target:	Bu-1
Abstract:	Bu-1 Products
Background:	Chicken Bu-1, a product of the Bu-1a and Bu-1b alleles, is a type I transmembrane glycosylated, disulfide-linked homodimer. MAb AV20 recognizes a monomorphic determinant on the Bu-1 B

Target Details

cell-associated alloantigens of both RPL 6(3) (Bu-1a) and 7(2) (Bu-1b) lines of inbred chickens. The antibody also identifies B cells in partially inbred birds. Bu-1 is found on 85-90 % of bursal cells, 2-8 % of thymocytes, 15-27 % of spleen cells, and 2-18 % of peripheral blood cells. It is also expressed on subsets of macrophages and monocytes, but not on granulocytes, erythrocytes or thrombocytes.

Application Details

Application Notes:

- **Applications:** FC - Quality tested , IHC-FS - Reported in literature , IHC-PS - Reported in literature , ICC - Reported in literature , IP - Reported in literature
- **Working Dilutions:** Flow Cytometry Purified (UNLB) antibody 1 g/106 cells FITC, BIOT, and AF488 conjugates 1 g/106 cells PE conjugate 0.2 g/106 cells AF647 conjugate 0.1 g/106 cells For flow cytometry, the suggested use of these reagents is in a final volume of 100 L

Sample Volume: 1 mL

Restrictions: For Research Use only

Handling

Concentration: 0.1 mg/mL

Buffer: 0.1 mg in 1.0 mL of PBS/Sodium azide and a stabilizing agent

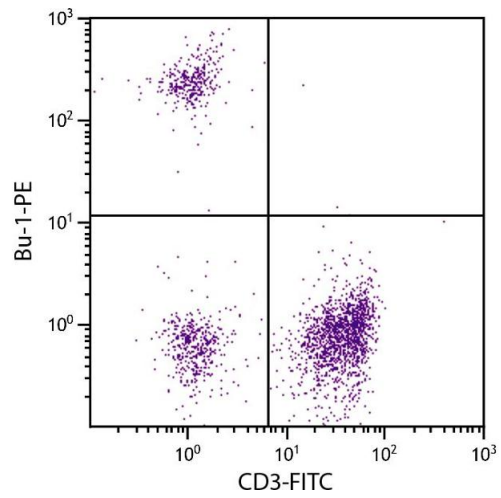
Preservative: Sodium azide

Precaution of Use: This product contains Sodium azide: a POISONOUS AND HAZARDOUS SUBSTANCE which should be handled by trained staff only.

Handling Advice: **Do not freeze!**
Protect conjugated products from light.
Each reagent is stable for the period shown on the bottle label if stored as directed.

Storage: 4 °C

Storage Comment: Store at 2-8°C



Flow Cytometry

Image 1. Chicken peripheral blood lymphocytes were stained with Mouse Anti-Chicken Bu-1-PE.