

Datasheet for ABIN135607  
**anti-ChT antibody (FITC)**[Go to Product page](#)

## 1 Image

## Overview

Quantity:	0.5 mg
Target:	ChT
Reactivity:	Chicken
Host:	Mouse
Clonality:	Monoclonal
Conjugate:	This ChT antibody is conjugated to FITC
Application:	Flow Cytometry (FACS)

## Product Details

Immunogen:	Chicken thymocytes
Clone:	CT1
Isotype:	IgG1
Specificity:	Chicken/Quail ChT1, Mr 63 & 103 kDa
Characteristics:	Mouse Anti-Chicken ChT1-FITC

## Target Details

Target:	ChT
Alternative Name:	ChT1 ( <a href="#">ChT Products</a> )
Background:	ChT1, a member of the Ig superfamily with one V-like and one C2-like domain, is a T cell antigen that is expressed on the surface of embryonic thymocytes (day 10). In young chickens, about

## Target Details

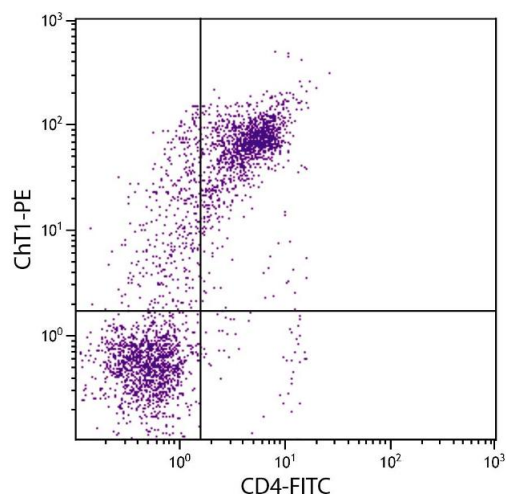
90 % of the thymocytes as well as a subpopulation of peripheral lymphocytes (which represent recent thymic emigrants) are ChT1 positive. Expression in the periphery declines with age and, in correlation with partial thymectomy, indicates that ChT1 can be used as an accurate marker for studying thymic function. CT1 can block T cell differentiation in vitro, in thymic organ cultures and in thymocyte precursors cultured on stromal cell monolayers. CT1 also recognizes quail cortical thymocytes.

## Application Details

Application Notes:	<ul style="list-style-type: none"><li>• <b>Applications:</b> FC - Quality tested , IP - Reported in literature</li><li>• <b>Working Dilutions:</b> Flow Cytometry Purified (UNLB) antibody 1 g/106 cells FITC and BIOT conjugates 1 g/106 cells PE conjugate 0.2 g/106 cells For flow cytometry, the suggested use of these reagents is in a final volume of 100 L</li></ul>
Comment:	In vitro inhibition of T cell differentiation
Sample Volume:	1 mL
Restrictions:	For Research Use only

## Handling

Concentration:	0.5 mg/mL
Buffer:	0.5 mg in 1.0 mL of PBS/Sodium azide
Preservative:	Sodium azide
Precaution of Use:	This product contains Sodium azide: a POISONOUS AND HAZARDOUS SUBSTANCE which should be handled by trained staff only.
Handling Advice:	<b>Protect conjugated products from light.</b> Each reagent is stable for the period shown on the bottle label if stored as directed.
Storage:	4 °C
Storage Comment:	Store at 2-8°C



### Flow Cytometry

**Image 1.** Chicken peripheral blood lymphocytes were stained with Mouse Anti-Chicken ChT1-PE.