

Datasheet for ABIN135613

Mouse anti-Human IgM Antibody (Biotin)[Go to Product page](#)**1** Image

Overview

Quantity:	0.5 mg
Target:	IgM
Reactivity:	Human
Host:	Mouse
Clonality:	Monoclonal
Conjugate:	Biotin
Application:	ELISA, Flow Cytometry (FACS)

Product Details

Immunogen:	Human IgM myeloma protein
Clone:	SA-DA4
Isotype:	IgG1
Specificity:	Reacts with the heavy chain of human IgM as demonstrated by ELISA.
Characteristics:	Mouse Anti-Human IgM-BIOT
Purification:	Immunoaffinity chromatography.

Target Details

Target:	IgM
Abstract:	IgM Products
Target Type:	Antibody

Application Details

Application Notes:

- **Applications:** ELISA - Quality tested , FLISA - Quality tested FC - Quality tested , IHC-FS - Reported in literature , ICC - Reported in literature , IP - Reported in literature , WB - Reported in literature , Multiplex - Reported in literature , Stim - Reported in literature
- **Working Dilutions:** ELISA AP conjugate 1:1,000 - 1:4,000 HRP conjugate 1:4,000 - 1:8,000 BIOT conjugate 1:5,000 - 10,000 FLISA FITC and AF488 conjugates 1:200 - 1:400 AF555 conjugate 1:100 - 1:400 PE, APC, and AF647 conjugates 1 g/mL Flow Cytometry Purified (UNLB) antibody 1 g/10⁶ cells FITC, BIOT, and AF488 conjugates 1 g/10⁶ cells PE and APC conjugates 0.2 g/10⁶ cells AF647 conjugate 0.1 g/10⁶ cells For flow cytometry, the suggested use of these reagents is in a final volume of 100 L

Restrictions:

For Research Use only

Handling

Concentration:

0.5 mg/mL

Buffer:

0.5 mg in 1.0 mL of PBS/Sodium azide

Preservative:

Sodium azide

Precaution of Use:

This product contains Sodium azide: a POISONOUS AND HAZARDOUS SUBSTANCE which should be handled by trained staff only.

Handling Advice:

Dilute only prior to immediate use

Each reagent is stable for the period shown on the bottle label if stored as directed.

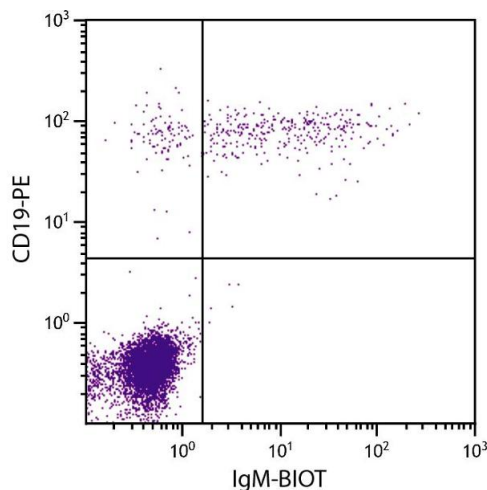
Storage:

4 °C

Storage Comment:

Store at 2-8°C

Images



Flow Cytometry

Image 1. Human peripheral blood lymphocytes were stained with Mouse Anti-Human IgM-BIOT.