

Datasheet for ABIN135636

Mouse anti-Human IgG2 (Fd Region) Antibody



[Go to Product page](#)

1 Image

2 Publications

Overview

Quantity:	0.5 mg
Target:	IgG2
Binding Specificity:	Fd Region
Reactivity:	Human
Host:	Mouse
Clonality:	Monoclonal
Application:	ELISA, Western Blotting (WB), Immunohistochemistry (IHC), Immunocytochemistry (ICC)

Product Details

Immunogen:	Human IgG2 myeloma protein
Clone:	HP6014
Isotype:	IgG1
Specificity:	Reacts with the Fd portion of the heavy chain of human IgG2 as demonstrated by ELISA
Characteristics:	Mouse Anti-Human IgG2 Fd-UNLB
Purification:	Purified

Target Details

Target:	IgG2
Abstract:	IgG2 Products
Target Type:	Antibody

Application Details

Restrictions: For Research Use only

Handling

Buffer: 0.5 mg of purified immunoglobulin in 1.0 mL of 100 mM borate buffered saline, pH 8.0.

Handling Advice: Dilute only prior to immediate use
Each reagent is stable for the period shown on the bottle label if stored as directed.

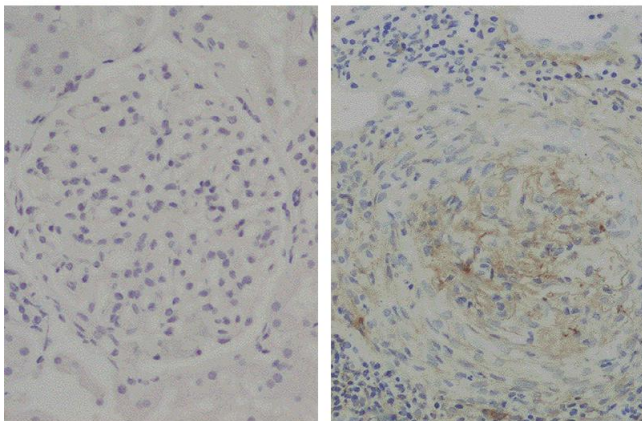
Storage: 4 °C

Publications

Product cited in: Dogan, Kozhaya, Placek, Gunter, Yigit, Hardy, Plassmeyer, Coatney, Lillard, Bukhari, Kleinberg, Hayes, Ardit, Klapper, Merin, Liang, Gupta, Alpan, Unutmaz: "SARS-CoV-2 specific antibody and neutralization assays reveal the wide range of the humoral immune response to virus." in: **Communications biology**, Vol. 4, Issue 1, pp. 129, (2021) ([PubMed](#)).

Haag, Schneider, Mason, Tuncel, Andersson, Peters, Burkhardt, Holmdahl: "Mass spectrometric analysis of citrullinated type II collagen reveals new citrulline-specific autoantibodies, which bind to human arthritic cartilage." in: **Arthritis & rheumatology (Hoboken, N.J.)**, (2014) ([PubMed](#)).

Images



Immunohistochemistry

Image 1. Paraffin embedded glomerular basement membrane tissue sections from patients with Anti-GBM disease were stained with Mouse Anti-Human IgG2 Fd-UNLB