

Datasheet for ABIN135664

Mouse anti-Human IgG3 (Hinge Region) Antibody

1 Image

5 Publications



[Go to Product page](#)

Overview

| | |
|----------------------|---|
| Quantity: | 0.5 mg |
| Target: | IgG3 |
| Binding Specificity: | Hinge Region |
| Reactivity: | Human |
| Host: | Mouse |
| Clonality: | Monoclonal |
| Application: | ELISA, Western Blotting (WB), Immunohistochemistry (IHC), Immunocytochemistry (ICC) |

Product Details

| | |
|------------------|--|
| Immunogen: | Human IgG3 myeloma protein |
| Clone: | HP6050 |
| Isotype: | IgG1 |
| Specificity: | Reacts with the hinge region of the heavy chain of human IgG3 as demonstrated by ELISA |
| Characteristics: | Mouse Anti-Human IgG3 Hinge-UNLB |
| Purification: | Purified |

Target Details

| | |
|--------------|-------------------------------|
| Target: | IgG3 |
| Abstract: | IgG3 Products |
| Target Type: | Antibody |

Application Details

Application Notes:

Working Dilution:

Immunofluorescence: 1 µg/10⁶ cells

Representative data are included in this product insert.

Each laboratory should determine an optimum working titer for use in its particular application.

Other applications have not been tested but use in such assays should not necessarily be excluded.

Restrictions:

For Research Use only

Handling

Buffer:

0.5 mg of purified immunoglobulin in 1.0 mL of 100 mM borate buffered saline, pH 8.0.

Handling Advice:

Dilute only prior to immediate use

Each reagent is stable for the period shown on the bottle label if stored as directed.

Storage:

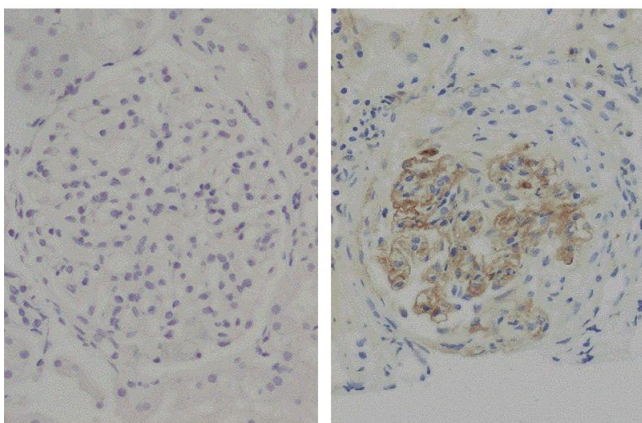
4 °C

Publications

Product cited in:

Nordengrün, Abdurrahman, Treffon, Wächter, Kahl, Bröker: "Allergic Reactions to Serine Protease-Like Proteins of Staphylococcus aureus." in: **Frontiers in immunology**, Vol. 12, pp. 651060, (2021) ([PubMed](#)).

Images



Immunohistochemistry

Image 1. Paraffin embedded glomerular basement membrane tissue sections from patients with Anti-GBM disease were stained with Mouse Anti-Human IgG3 Hinge-UNLB