

Datasheet for ABIN1383668

anti-CD25 antibody[1 Image](#)[1 Publication](#)[Go to Product page](#)

Overview

Quantity:	200 µL
Target:	CD25 (IL2RA)
Reactivity:	Human
Host:	Mouse
Clonality:	Monoclonal
Conjugate:	This CD25 antibody is un-conjugated
Application:	Flow Cytometry (FACS), Immunohistochemistry (IHC), ELISA, Functional Studies (Func)

Product Details

Immunogen:	PHA activated T cells, Myeloma X63/AG.8653 x Balb/c spleen cells
Clone:	B-F2
Isotype:	IgG1 kappa
Specificity:	Recognises the Interleukin 2 Receptor alpha chain (IL-2 Ra), a 55 kDa protein
Purification:	Ion exchange chromatography
Sterility:	0.22 µm filtered
Biological Activity Comment:	Inhibits mixed lymphocyte culture

Target Details

Target:	CD25 (IL2RA)
Alternative Name:	CD25 (IL2RA Products)

Target Details

Background: IL-2R α -Chain

Molecular Weight: 55 kDa

Pathways: [JAK-STAT Signaling](#), [Growth Factor Binding](#), [Activated T Cell Proliferation](#)

Application Details

Application Notes: Optimal working dilution should be determined by the investigator.

Restrictions: For Research Use only

Handling

Format: Liquid

Buffer: Phosphate-buffered saline. Sterile-filtered through 0.22 μ m. Carrier and preservative free

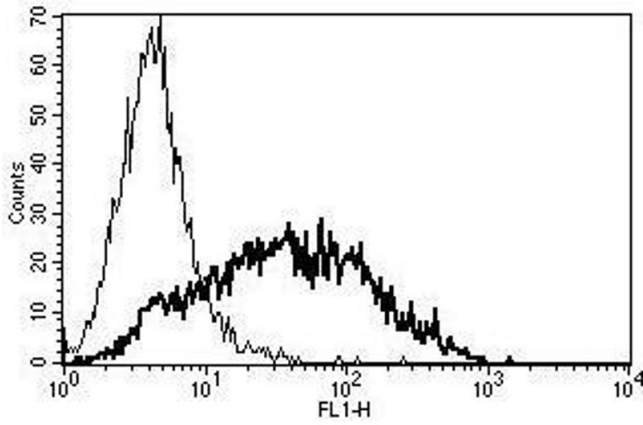
Preservative: Without preservative

Storage: 4 °C

Storage Comment: Stable at +2-8°C for 12 months. For longer storage freeze aliquots.

Publications

Product cited in: Engert, Martin, Amlot, Wijdenes, Diehl, Thorpe: "Immunotoxins constructed with anti-CD25 monoclonal antibodies and deglycosylated ricin A-chain have potent anti-tumour effects against human Hodgkin cells in vitro and solid Hodgkin tumours in mice." in: **International journal of cancer. Journal international du cancer**, Vol. 49, Issue 3, pp. 450-6, (1991) ([PubMed](#)).



Flow Cytometry

Image 1. A typical staining pattern with the B-F2 monoclonal antibody of PHA activated lymphocytes