

Datasheet for ABIN1383710  
**anti-ICAM-3/CD50 antibody**



[Go to Product page](#)

1 Image

## Overview

Quantity:	200 µL
Target:	ICAM-3/CD50 (ICAM3)
Reactivity:	Human
Host:	Mouse
Clonality:	Monoclonal
Conjugate:	This ICAM-3/CD50 antibody is un-conjugated
Application:	Flow Cytometry (FACS), ELISA, Immunoprecipitation (IP)

## Product Details

Immunogen:	U266 cell line, Myeloma X63/AG.8653 x Balb/c spleen cells
Clone:	B-R1
Isotype:	IgG1 kappa
Specificity:	Recognises the Intercellular Adhesion Molecule-3 (ICAM-3), a 110-140 kDa protein
Purification:	Ion exchange chromatography
Sterility:	0.22 µm filtered

## Target Details

Target:	ICAM-3/CD50 (ICAM3)
Alternative Name:	CD50 ( <a href="#">ICAM3 Products</a> )
Background:	ICAM-3

## Target Details

---

Molecular Weight: 110-140 kDa

## Application Details

---

Application Notes: Optimal working dilution should be determined by the investigator.

Restrictions: For Research Use only

## Handling

---

Format: Liquid

Buffer: Phosphate-buffered saline. Sterile-filtered through 0.22 µm. Carrier and preservative free

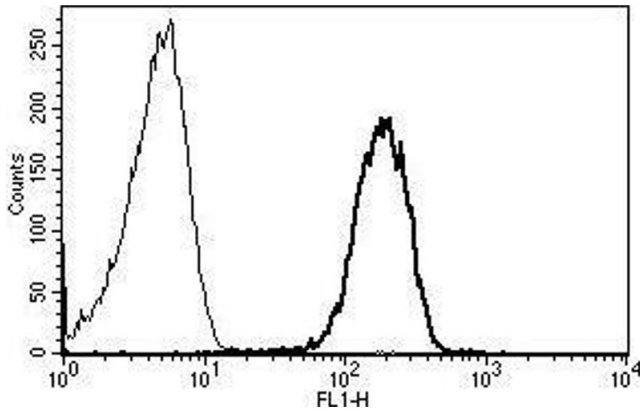
Preservative: Without preservative

Storage: 4 °C

Storage Comment: Stable at +2-8°C for 12 months. For longer storage freeze aliquots.

## Images

---



### Flow Cytometry

**Image 1.** A typical staining pattern with the B-R1 monoclonal antibody of lymphocytes