



[Go to Product page](#)

Datasheet for ABIN1383746
anti-TRAIL antibody (Biotin)

1 Image

Overview

Quantity:	1 mL
Target:	TRAIL (TNFSF10)
Reactivity:	Human
Host:	Mouse
Clonality:	Monoclonal
Conjugate:	This TRAIL antibody is conjugated to Biotin
Application:	Flow Cytometry (FACS)

Product Details

Immunogen:	Recombinant human TRAIL, Myeloma X63/AG.8653 x Balb/c spleen cells
Clone:	B-S23
Isotype:	IgG1 kappa
Specificity:	Recognises the TRAIL, APO2L antigen, a 32 kDa protein
Purification:	Ion exchange chromatography

Target Details

Target:	TRAIL (TNFSF10)
Alternative Name:	TRAIL (TNFSF10 Products)
Background:	APO2L, TRAIL
Molecular Weight:	32 kDa

Target Details

Pathways: [Apoptosis](#), [Positive Regulation of Endopeptidase Activity](#)

Application Details

Application Notes: Use 10 μ L to label 10^6 cells or 100 μ L of whole blood

Restrictions: For Research Use only

Handling

Format: Liquid

Reconstitution: Reconstitute with 1 mL deionised water

Buffer: Lyophilised in phosphate-buffered saline with 1 % BSA and 0.1 % sodium azide

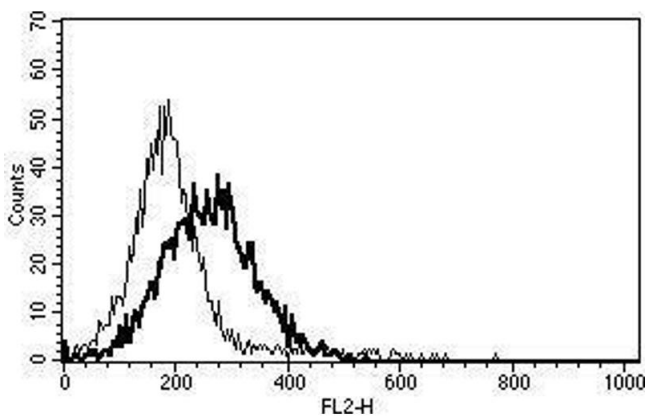
Preservative: Sodium azide

Precaution of Use: This product contains Sodium azide: a POISONOUS AND HAZARDOUS SUBSTANCE which should be handled by trained staff only.

Storage: 4 °C

Storage Comment: Stable at +2-8°C for six months after reconstitution. For longer storage freeze aliquots.

Images



Flow Cytometry

Image 1. A typical staining pattern with the B-S23 monoclonal antibody of IFN α 2+CD3 mAb+CD28 mAb activated lymphocytes