

Datasheet for ABIN1383750  
**anti-CXCL10 antibody**



[Go to Product page](#)

1 Image

## Overview

Quantity:	500 µL
Target:	CXCL10
Reactivity:	Human
Host:	Mouse
Clonality:	Monoclonal
Conjugate:	This CXCL10 antibody is un-conjugated
Application:	ELISA, Flow Cytometry (FACS)

## Product Details

Immunogen:	Recombinant human IP-10, Myeloma X63/AG.8653 x Balb/c node cells
Clone:	B-C50
Isotype:	IgG2a, kappa
Specificity:	Recognises both natural and recombinant human IP-10
Purification:	Ion exchange chromatography (and affinity chromatography for certain batches).
Sterility:	0.22 µm filtered

## Target Details

Target:	CXCL10
Alternative Name:	IP-10 ( <a href="#">CXCL10 Products</a> )
Background:	CXCL10

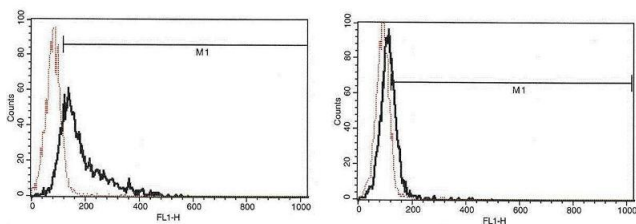
## Application Details

Application Notes:	Optimal working dilution should be determined by the investigator.
Restrictions:	For Research Use only

## Handling

Format:	Liquid
Buffer:	Phosphate-buffered saline. Sterile-filtered through 0.22 µm. Carrier and preservative free
Preservative:	Without preservative
Storage:	4 °C
Storage Comment:	Stable at +2-8°C for 12 months. For longer storage freeze aliquots.

## Images



**Image 1.** We used U937 cells 3 days after passaging. Half were activated with IFN-gamma 100 ng/mL for 20 hours and half were used as control. Cell concentration at the beginning of activation was 2.105 cells/mL. Brefaldin A was used as an intracellular blocking agent at 1 µg/mL, in contact with the cells for 4 to 6 hours. The graph on the left represents activated U937 cells marked with B-C50 and the graph on the right shows B-C50 with non-activated U937 cells. In the two cases, the dotted line represents the IgG2a isotype control (B-Z2)