

Datasheet for ABIN1383851
anti-ErbB2/Her2 antibody



[Go to Product page](#)

1 Image

1 Publication

Overview

Quantity:	200 µL
Target:	ErbB2/Her2
Reactivity:	Human
Host:	Mouse
Clonality:	Monoclonal
Conjugate:	This ErbB2/Her2 antibody is un-conjugated
Application:	Immunohistochemistry (IHC), Flow Cytometry (FACS)

Product Details

Immunogen:	KG-1a cell line, Myeloma X63/AG.8653 x Balb/c spleen cells
Clone:	B-F23
Isotype:	IgG1 kappa
Specificity:	Recognises the Gp105-120 antigen, a 105-120 kDa protein
Purification:	Ion exchange chromatography
Sterility:	0.22 µm filtered

Target Details

Target:	ErbB2/Her2
Alternative Name:	CD34 Class III (ErbB2/Her2 Products)
Molecular Weight:	105-120 kDa

Target Details

Pathways: [RTK Signaling](#), [Fc-epsilon Receptor Signaling Pathway](#), [EGFR Signaling Pathway](#), [Neurotrophin Signaling Pathway](#), [Skeletal Muscle Fiber Development](#)

Application Details

Application Notes: Optimal working dilution should be determined by the investigator.

Restrictions: For Research Use only

Handling

Format: Liquid

Buffer: Phosphate-buffered saline. Sterile-filtered through 0.22 µm. Carrier and preservative free

Preservative: Without preservative

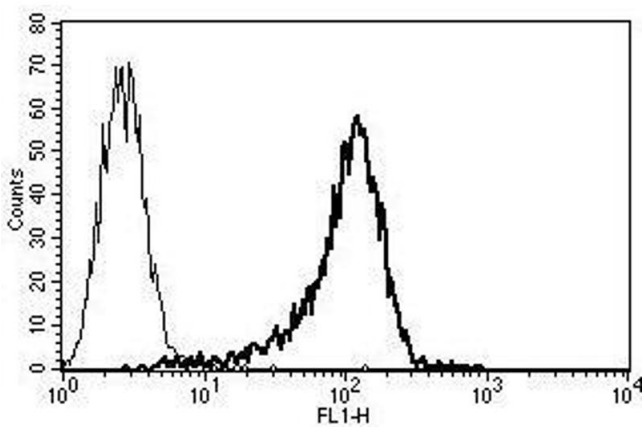
Storage: 4 °C

Storage Comment: Stable at +2-8°C for 12 months. DO NOT FREEZE.

Publications

Product cited in: Parent, Marion, Furio, Trépo, Petit: "Origin and characterization of a human bipotent liver progenitor cell line." in: **Gastroenterology**, Vol. 126, Issue 4, pp. 1147-56, (2004) ([PubMed](#)).

Images



Flow Cytometry

Image 1. A typical staining pattern with the B-F23 monoclonal antibody of KG-1a cell line