

Datasheet for ABIN1383985

anti-NCR1 antibody[Go to Product page](#)**1** Image

Overview

Quantity:	200 µL
Target:	NCR1
Reactivity:	Human
Host:	Mouse
Clonality:	Monoclonal
Conjugate:	This NCR1 antibody is un-conjugated
Application:	Functional Studies (Func)

Product Details

Immunogen:	Recombinant human NKp46/Fc (CD335), Myeloma X63/AG.8653 x Balb/c node cells
Clone:	B-L46
Isotype:	IgG2a, kappa
Specificity:	Recognises natural and recombinant NKp46
Biological Activity Comment:	Measured by the ability of the coated antibody to induce degranulation of activated NK cells and to enhance IFN γ secretion by non-activated NK cells

Target Details

Target:	NCR1
Alternative Name:	NKp46 (NCR1 Products)
Background:	CD335, NCR1, Ly94

Target Details

Pathways: [Regulation of Leukocyte Mediated Immunity](#)

Application Details

Application Notes:	Optimal working dilution should be determined by the investigator.
Restrictions:	For Research Use only

Handling

Format:	Liquid
Buffer:	Phosphate-buffered saline. Sterile-filtered through 0.22 µm. Carrier and preservative free
Preservative:	Without preservative
Storage:	4 °C
Storage Comment:	Stable at +2-8°C for 12 months. For longer storage freeze aliquots.

Images

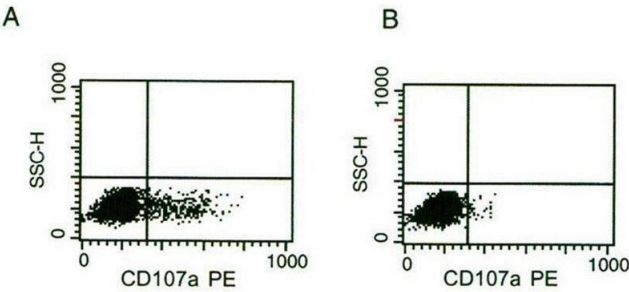


Image 1. CD107a surface expression on activated NK cells: IL-2 activated NK are cultured 4 hours on coated anti-NKp46 monoclonal antibody (A) or on IgG2a isotypic control (B).