



[Go to Product page](#)

Datasheet for ABIN1384014

anti-PVRL2 antibody

1 Image

Overview

Quantity:	2 mL
Target:	PVRL2
Reactivity:	Human
Host:	Mouse
Clonality:	Monoclonal
Conjugate:	This PVRL2 antibody is un-conjugated
Application:	Flow Cytometry (FACS)

Product Details

Immunogen:	KG-1 cell line, Myeloma X63/AG.8653 x Balb/c spleen cells
Clone:	B-C12
Isotype:	IgG2b, kappa
Specificity:	Recognises Nectin-2, the polio retrovirus receptor-2 (PRR2)
Purification:	Ion exchange chromatography

Target Details

Target:	PVRL2
Alternative Name:	CD112 (PVRL2 Products)
Background:	HVEB, PRR2
Pathways:	Regulation of Leukocyte Mediated Immunity , Positive Regulation of Immune Effector Process ,

Target Details

Cell-Cell Junction Organization

Application Details

Application Notes: Use 10 μ L to label 10^6 cells or 100 μ L of whole blood

Restrictions: For Research Use only

Handling

Format: Liquid

Buffer: Phosphate-buffered saline with 1 % BSA and 0.09 % sodium azide

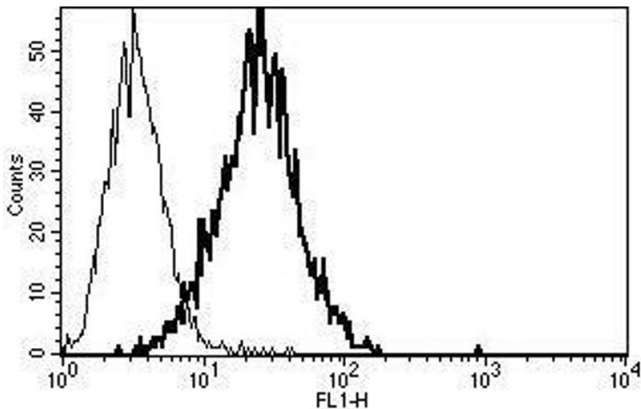
Preservative: Sodium azide

Precaution of Use: This product contains Sodium azide: a POISONOUS AND HAZARDOUS SUBSTANCE which should be handled by trained staff only.

Storage: 4 °C

Storage Comment: Stable at +2-8°C for 12 months. For longer storage freeze aliquots.

Images



Flow Cytometry

Image 1. A typical staining pattern with the B-C12 monoclonal antibody of KG1 cell line