



[Go to Product page](#)

Datasheet for ABIN1385063

anti-Rubisco antibody

3 Images

2 Publications

Overview

Quantity:	100 µL
Target:	Rubisco (RBCS)
Reactivity:	Arabidopsis thaliana
Host:	Rabbit
Clonality:	Polyclonal
Conjugate:	This Rubisco antibody is un-conjugated
Application:	Western Blotting (WB), ELISA, Immunofluorescence (Paraffin-embedded Sections) (IF (p)), Immunohistochemistry (Paraffin-embedded Sections) (IHC (p)), Immunofluorescence (Cultured Cells) (IF (cc)), Immunohistochemistry (Frozen Sections) (IHC (fro))

Product Details

Immunogen:	KLH conjugated synthetic peptide derived from Arabidopsis thaliana RUBISCO
Isotype:	IgG
Cross-Reactivity:	Human, Plant
Cross-Reactivity (Details):	Arabidopsis thaliana,
Purification:	Purified by Protein A.

Target Details

Target:	Rubisco (RBCS)
Alternative Name:	RUBISCO (RBCS Products)

Target Details

Background: Synonyms: rbcL, RBL_SPIOL, Ribulose biphosphate carboxylase large chain, RuBisCO large subunit, ribulose-1,5-bisphosphate carboxylase/oxygenase large subunit.
Background: RuBisCO catalyzes two reactions: the carboxylation of D-ribulose 1,5-bisphosphate, the primary event in carbon dioxide fixation, as well as the oxidative fragmentation of the pentose substrate in the photorespiration process. Both reactions occur simultaneously and in competition at the same active site. Sequence similarities: Belongs to the RuBisCO large chain family. Type I subfamily. Post-translational modifications: The disulfide bond which can form between Cys-247 in the large chain dimeric partners within the hexadecamer appears to be associated with oxidative stress and protein turnover (By similarity). The disulfide bonds reported in 1RBO may be the result of oxidation during crystallization.

Gene ID: 844754

Application Details

Application Notes: WB 1:100-1000
IHC-P 1:100-500
IF(IHC-P) 1:50-200

Restrictions: For Research Use only

Handling

Format: Liquid

Concentration: 1 µg/µL

Buffer: 0.01M TBS(pH 7.4) with 1 % BSA, 0.02 % Proclin300 and 50 % Glycerol.

Preservative: Sodium azide

Precaution of Use: This product contains Sodium azide: a POISONOUS AND HAZARDOUS SUBSTANCE, which should be handled by trained staff only.

Storage: 4 °C, -20 °C

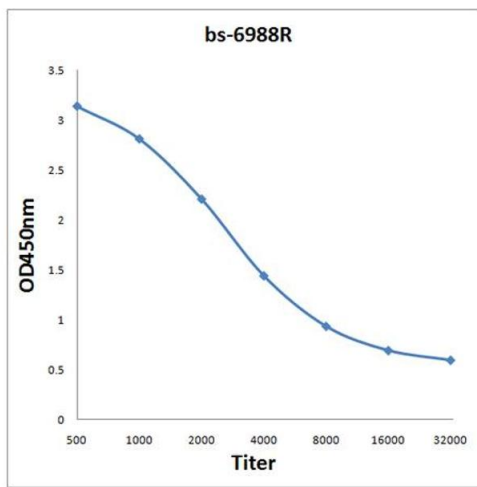
Storage Comment: Shipped at 4°C. Store at -20°C for one year. Avoid repeated freeze/thaw cycles.

Expiry Date: 12 months

Product cited in: Cheng, Fu, Liao, Xu, Zeng, Tang, Li, Lai, Yang: "Differential accumulation of specialized metabolite l-theanine in green and albino-induced yellow tea (*Camellia sinensis*) leaves." in: **Food chemistry**, Vol. 276, pp. 93-100, (2019) ([PubMed](#)).

Zhang, Chow, Liu, Zhang, Liu, Peng: "A magic red coat on the surface of young leaves: anthocyanins distributed in trichome layer protect *Castanopsis fissa* leaves from photoinhibition." in: **Tree physiology**, Vol. 36, Issue 10, pp. 1296-1306, (2016) ([PubMed](#)).

Images

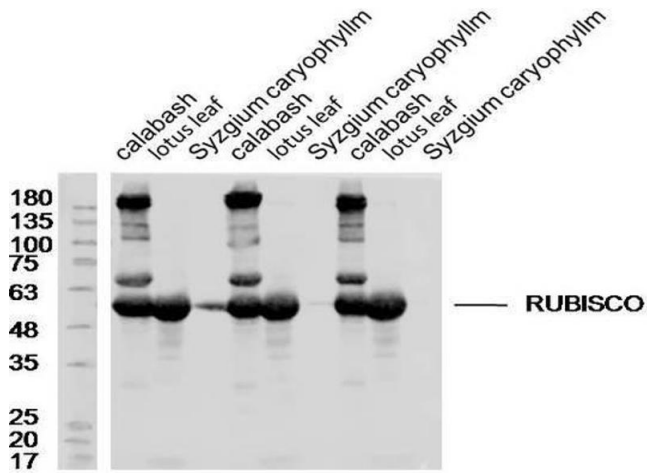


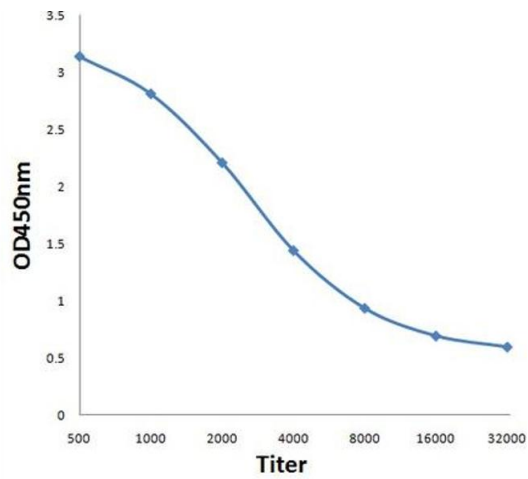
ELISA

Image 1. Antigen: 0.2 µg/100 µL Primary: Antiserum, 1:500, 1:1000, 1:2000, 1:4000, 1:8000, 1:16000, 1:32000; Secondary: HRP conjugated Goat-Anti-Rabbit IgG at 1: 5000; TMB staining; Read the data in MicroplateReader by 450

Western Blotting

Image 2. Lane 1,4,7: Calabas lysates, Lane 2,5,8: Lotus leaf lysates, Lane 3,6,9: Syzgium caryophyllm lysates probed with Rabbit Anti-RUBISCO Polyclonal Antibody, Unconjugated at 1:300 overnight at 4°C. Followed by a conjugated secondary antibody at 1:10000 for 60 min at 37°C.





ELISA

Image 3. Antigen: 0.2ug/100ul, Primary: Antiserum, 1:500, 1:1000, 1:2000, 1:4000, 1:8000, 1:16000, 1:32000, Secondary: HRP conjugated Goat-Anti-Rabbit IgG at 1: 5000, TMB staining, Read the data in MicroplateReader by 450nm