

Datasheet for ABIN1385094
anti-CSN3 antibody (AA 111-170)[Go to Product page](#)[1 Image](#)[1 Publication](#)

Overview

Quantity:	100 µL
Target:	CSN3
Binding Specificity:	AA 111-170
Reactivity:	Cow
Host:	Rabbit
Clonality:	Polyclonal
Conjugate:	This CSN3 antibody is un-conjugated
Application:	Western Blotting (WB), ELISA, Immunofluorescence (Paraffin-embedded Sections) (IF (p)), Immunohistochemistry (Frozen Sections) (IHC (fro))

Product Details

Immunogen:	KLH conjugated synthetic peptide derived from bovine Kappa-casein
Isotype:	IgG
Cross-Reactivity:	Cow
Predicted Reactivity:	Sheep
Purification:	Purified by Protein A.

Target Details

Target:	CSN3
Alternative Name:	CSN3 (CSN3 Products)

Target Details

Background:	Synonyms: CSNK, CSN10, Kappa-casein, CSN3 Background: Kappa-casein stabilizes micelle formation, preventing casein precipitation in milk. Casoxins A, B and C have opioid antagonist activity. Casoxin C causes biphasic ileal contractions through the binding to the complement C3a receptors. Casoplatelin inhibits platelet aggregation.
-------------	---

Gene ID:	281728
----------	--------

UniProt:	P02668
----------	------------------------

Application Details

Application Notes:	WB 1:300-5000 ELISA 1:500-1000 IHC-F 1:100-500 IF(IHC-P) 1:50-200
--------------------	--

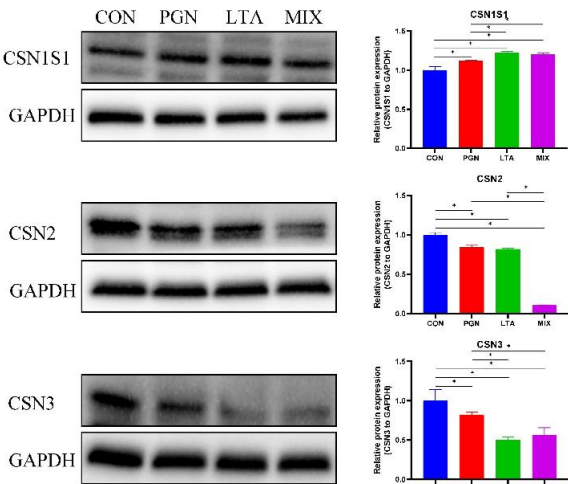
Restrictions:	For Research Use only
---------------	-----------------------

Handling

Format:	Liquid
Concentration:	1 µg/µL
Buffer:	0.01M TBS(pH 7.4) with 1 % BSA, 0.02 % Proclin300 and 50 % Glycerol.
Preservative:	ProClin
Precaution of Use:	This product contains ProClin: a POISONOUS AND HAZARDOUS SUBSTANCE, which should be handled by trained staff only.
Storage:	4 °C, -20 °C
Storage Comment:	Shipped at 4°C. Store at -20°C for one year. Avoid repeated freeze/thaw cycles.
Expiry Date:	12 months

Publications

Product cited in:	Wu, Chen, Sun, Dong, Wang, Chen, Dong: "PGN and LTA from Staphylococcus aureus Induced Inflammation and Decreased Lactation through Regulating DNA Methylation and Histone H3 Acetylation in Bovine Mammary Epithelial Cells." in: Toxins , Vol. 12, Issue 4, (2021) (PubMed).
-------------------	---



Western Blotting

Image 1. The protein expression of the three caseins (CSN1S1, CSN2, and CSN3). The total protein was isolated to examine casein expression by Western Blot analysis, and the glyceraldehyde-3-phosphate dehydrogenase (GAPDH) was selected as a housekeeping protein. Quantitation of blots is representative of three independent experiments. Data represent the mean and standard deviation ($n = 6$), and the asterisk indicates statistical difference ($* p < 0.05$) between the indicated columns, based on one-way analysis of variance and Duncan's range test. CSN1S1, α S1-casein, CSN2, β -casein, CSN3, κ -casein, CON, control group, PGN, peptidoglycan group, LTA, lipoteichoic acid group, MIX, PGN + LTA group. - figure provided by CiteAb. Source: PMID32283626