

Datasheet for ABIN1385135
anti-CD235b/GYPB antibody (AA 21-91)[Go to Product page](#)

2 Images

Overview

Quantity:	100 µL
Target:	CD235b/GYPB (GYPB)
Binding Specificity:	AA 21-91
Reactivity:	Human
Host:	Rabbit
Clonality:	Polyclonal
Conjugate:	This CD235b/GYPB antibody is un-conjugated
Application:	ELISA, Immunofluorescence (Cultured Cells) (IF (cc)), Immunofluorescence (Paraffin-embedded Sections) (IF (p)), Immunohistochemistry (Paraffin-embedded Sections) (IHC (p)), Immunohistochemistry (Frozen Sections) (IHC (fro)), Immunocytochemistry (ICC)

Product Details

Immunogen:	KLH conjugated synthetic peptide derived from human Glycophorin B
Isotype:	IgG
Cross-Reactivity:	Human
Purification:	Purified by Protein A.

Target Details

Target:	CD235b/GYPB (GYPB)
Alternative Name:	GYPB (GYPB Products)

Target Details

Background:	<p>Synonyms: SS, GPB, MNS, PAS-3, CD235b, GPB.NY, HGpMiX, GpMiIII, HGpMiVI, GYPHe.NY, HGpMiIII, Glycophorin-B, SS-active sialoglycoprotein, Sialoglycoprotein delta, GYPB</p> <p>Background: Glycophorins A, B and C are sialoglycoproteins of the human erythrocyte membrane, which bear the antigenic determinants for the MN, Ss and Gerbich blood groups, respectively. Glycophorins span the membrane once and present their amino-terminal end to the extracellular surface of the human erythrocyte. The genetic array of expressed glycophorin surface antigens on erythrocytes defines the blood group phenotype of the individual. The human Glycophorin A gene maps to chromosome 4q31.21, contains seven exons which are 97 % homologous to Glycophorin B, and encodes a 150 amino acid protein. The human Glycophorin B gene maps to chromosome 4q31.21 and encodes a 91 amino acid protein. The human Glycophorin C gene maps to chromosome 2q14.3 and contains four exons. Glycophorin C transcript can generate two protein isoforms. Isoform 1 includes all 4 exons and encodes the full length 128 amino acid protein. Isoform 2 is missing exon 2 and encodes a 109 amino acid protein, which specifies the Yus subtype of the Gerbich phenotype.</p>
-------------	--

Gene ID:	2994
----------	------

UniProt:	P06028
----------	------------------------

Application Details

Application Notes:	ELISA 1:500-1000 IHC-P 1:200-400 IHC-F 1:100-500 IF(IHC-P) 1:50-200 IF(IHC-F) 1:50-200 IF(ICC) 1:50-200 ICC 1:100-500
--------------------	---

Restrictions:	For Research Use only
---------------	-----------------------

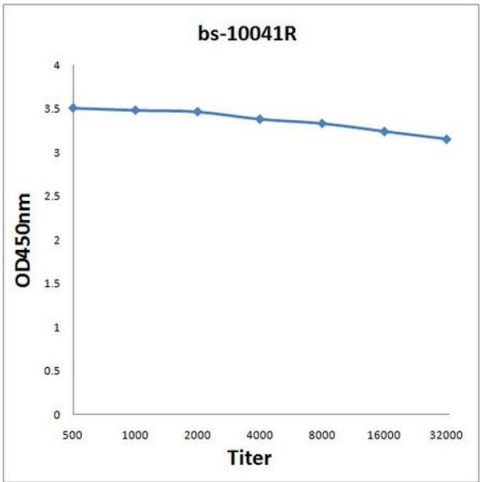
Handling

Format:	Liquid
Concentration:	1 µg/µL
Buffer:	0.01M TBS(pH 7.4) with 1 % BSA, 0.02 % Proclin300 and 50 % Glycerol.
Preservative:	ProClin

Handling

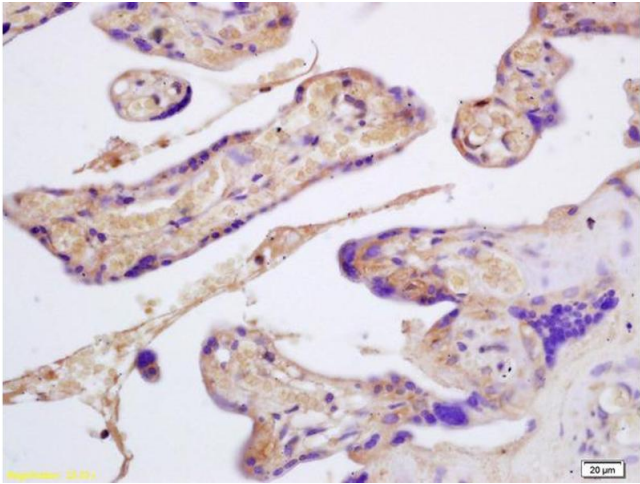
Precaution of Use:	This product contains ProClin: a POISONOUS AND HAZARDOUS SUBSTANCE, which should be handled by trained staff only.
Storage:	4 °C,-20 °C
Storage Comment:	Shipped at 4°C. Store at -20°C for one year. Avoid repeated freeze/thaw cycles.
Expiry Date:	12 months

Images



ELISA

Image 1. Antigen: 0.2 µg/100 µL Primary: Antiserum, 1:500, 1:1000, 1:2000, 1:4000, 1:8000, 1:16000, 1:32000; Secondary: HRP conjugated Goat-Anti-Rabbit IgG at 1: 5000; TMB staining; Read the data in MicroplateReader by 450



Immunohistochemistry

Image 2. Formalin-fixed and paraffin embedded human placenta labeled with Rabbit Anti GYPB/CD235b/Glycophorin B Polyclonal Antibody, Unconjugated (ABIN1385135) at 1:200 followed by conjugation to the secondary antibody and DAB staining