



Datasheet for ABIN1385159  
**anti-PCDH20 antibody (AA 611-710)**



[Go to Product page](#)

2 Images

Overview

Quantity:	100 µL
Target:	PCDH20
Binding Specificity:	AA 611-710
Reactivity:	Human, Rat, Mouse
Host:	Rabbit
Clonality:	Polyclonal
Conjugate:	This PCDH20 antibody is un-conjugated
Application:	Western Blotting (WB), Flow Cytometry (FACS), ELISA, Immunohistochemistry (Paraffin-embedded Sections) (IHC (p)), Immunofluorescence (Paraffin-embedded Sections) (IF (p))

Product Details

Immunogen:	KLH conjugated synthetic peptide derived from human PCDH20
Isotype:	IgG
Cross-Reactivity:	Human, Mouse, Rat
Predicted Reactivity:	Horse,Rabbit
Purification:	Purified by Protein A.

Target Details

Target:	PCDH20
Alternative Name:	PCDH20 ( <a href="#">PCDH20 Products</a> )

## Target Details

---

Background: Synonyms: PCDH13, Protocadherin-20, Protocadherin-13, PCDH20  
Background: Potential calcium-dependent cell-adhesion protein.

Gene ID: 64881

UniProt: [Q8N6Y1](#)

## Application Details

---

Application Notes: WB 1:300-5000  
ELISA 1:500-1000  
FCM 1:20-100  
IHC-P 1:200-400

Restrictions: For Research Use only

## Handling

---

Format: Liquid

Concentration: 1 µg/µL

Buffer: 0.01M TBS( pH 7.4) with 1 % BSA, 0.02 % Proclin300 and 50 % Glycerol.

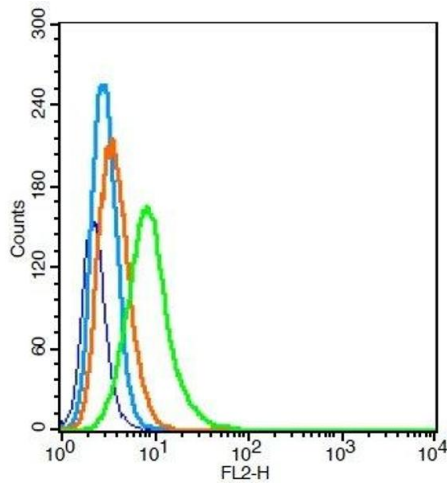
Preservative: ProClin

Precaution of Use: This product contains ProClin: a POISONOUS AND HAZARDOUS SUBSTANCE, which should be handled by trained staff only.

Storage: 4 °C, -20 °C

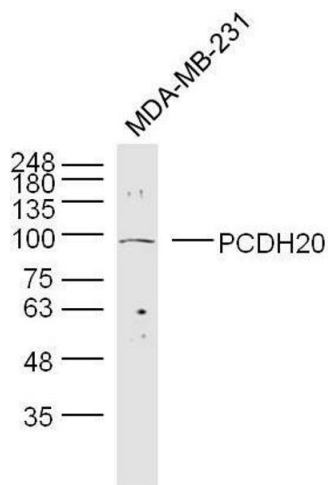
Storage Comment: Shipped at 4°C. Store at -20°C for one year. Avoid repeated freeze/thaw cycles.

Expiry Date: 12 months



### Flow Cytometry

**Image 1.** RSC96 cells probed with PCDH20 Polyclonal Antibody, Unconjugated at 1:100 for 30 minutes followed by incubation with a conjugated secondary (PE Conjugated) (green) for 30 minutes compared to control cells (blue), secondary only (light blue) and isotype control (orange).



### Western Blotting

**Image 2.** Lane 1: MDA-MB-231 cell lysates probed with PCDH20 Polyclonal Antibody, Unconjugated at 1:300 overnight at 4°C. Followed by a conjugated secondary antibody at 1:10000 for 90 min at 37°C.