

Datasheet for ABIN1385162  
**anti-LALBA antibody (AA 61-142)**[Go to Product page](#)

## 2 Images

## Overview

Quantity:	100 µL
Target:	LALBA
Binding Specificity:	AA 61-142
Reactivity:	Human
Host:	Rabbit
Clonality:	Polyclonal
Conjugate:	This LALBA antibody is un-conjugated
Application:	Western Blotting (WB), ELISA, Immunocytochemistry (ICC), Immunohistochemistry (Paraffin-embedded Sections) (IHC (p)), Immunofluorescence (Paraffin-embedded Sections) (IF (p)), Immunofluorescence (Cultured Cells) (IF (cc)), Immunohistochemistry (Frozen Sections) (IHC (fro))

## Product Details

Immunogen:	KLH conjugated synthetic peptide derived from human LALBA/alpha Lactalbumin
Isotype:	IgG
Cross-Reactivity:	Human
Purification:	Purified by Protein A.

## Target Details

Target:	LALBA
Alternative Name:	LALBA/alpha Lactalbumin ( <a href="#">LALBA Products</a> )

## Target Details

Background: Synonyms: a-LACTA, alfaLA, Alpha-lactalbumin, Lactalbumin alpha, Lactose synthase B protein, LALBA, LALBA\_HUMAN, Lysozyme-like protein 7, LYZL7.

Background: Alpha-lactalbumin is the B protein of lactose synthetase secreted by the mammary epithelial cells. It is a potent  $\text{Ca}^{2+}$ -elevating and apoptosis-inducing agent with broad, yet selective, cytotoxic activity. Multimeric  $\alpha$ -lactalbumin has been shown to kill all transformed, embryonic and lymphoid cells tested, but not mature epithelial elements. This suggests that milk contributes to mucosal immunity not only by furnishing antimicrobial molecules but also by policing the function of lymphocytes and epithelium.  $\alpha$ -lactalbumin may be helpful in discovering the site of origin of metastatic breast tumors. Human lactalbumin contains 123 amino acid residues. Comparison of the 5' flanking sequences of the two Alpha-lactalbumin genes with those of five casein genes reveals the presence of a highly conserved region extending from position -140 to -110 in all seven sequences examined, suggesting a possible regulatory role in the hormonal control or tissue-specific expression of milk protein genes in the mammary gland.

Gene ID: 3906

UniProt: [P00709](#)

## Application Details

Application Notes: WB 1:300-5000  
ELISA 1:500-1000  
IHC-P 1:200-400  
IHC-F 1:100-500  
IF(IHC-P) 1:50-200  
IF(IHC-F) 1:50-200  
IF(ICC) 1:50-200  
ICC 1:100-500

Restrictions: For Research Use only

## Handling

Format: Liquid

Concentration: 1  $\mu\text{g}/\mu\text{L}$

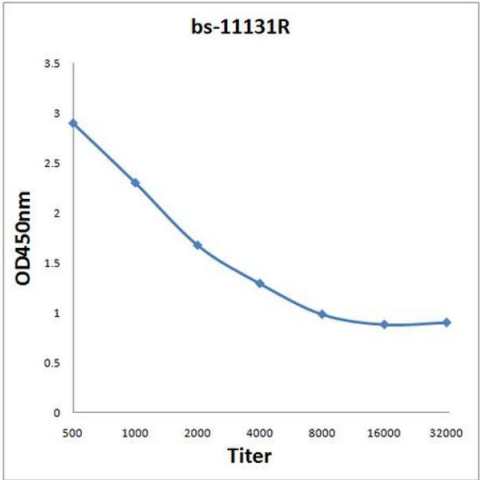
Buffer: 0.01M TBS( pH 7.4) with 1 % BSA, 0.02 % Proclin300 and 50 % Glycerol.

Preservative: ProClin

Handling

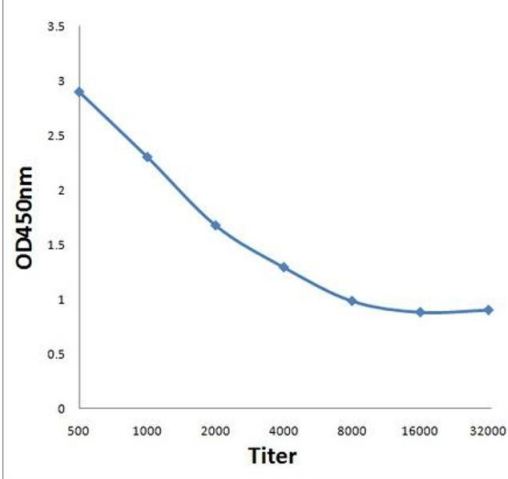
Precaution of Use:	This product contains ProClin: a POISONOUS AND HAZARDOUS SUBSTANCE, which should be handled by trained staff only.
Storage:	4 °C,-20 °C
Storage Comment:	Shipped at 4°C. Store at -20°C for one year. Avoid repeated freeze/thaw cycles.
Expiry Date:	12 months

Images



**ELISA**

**Image 1.** Antigen: 0.2 µg/100 µL Primary: Antiserum, 1:500, 1:1000, 1:2000, 1:4000, 1:8000, 1:16000, 1:32000; Secondary: HRP conjugated Goat-Anti-Rabbit IgG at 1: 5000; TMB staining; Read the data in MicroplateReader by 450



**ELISA**

**Image 2.** Antigen: 0.2ug/100ul, Primary: Antiserum, 1:500, 1:1000, 1:2000, 1:4000, 1:8000, 1:16000, 1:32000, Secondary: HRP conjugated Goat-Anti-Rabbit IgG at 1: 5000, TMB staining, Read the data in MicroplateReader by 450nm