

Datasheet for ABIN1385173
anti-PCDHB12 antibody (AA 121-220)[Go to Product page](#)

2 Images

Overview

Quantity:	100 µL
Target:	PCDHB12
Binding Specificity:	AA 121-220
Reactivity:	Human
Host:	Rabbit
Clonality:	Polyclonal
Conjugate:	This PCDHB12 antibody is un-conjugated
Application:	Western Blotting (WB), ELISA, Immunofluorescence (Cultured Cells) (IF (cc)), Immunofluorescence (Paraffin-embedded Sections) (IF (p)), Immunohistochemistry (Paraffin- embedded Sections) (IHC (p)), Immunohistochemistry (Frozen Sections) (IHC (fro)), Immunocytochemistry (ICC)

Product Details

Immunogen:	KLH conjugated synthetic peptide derived from human PCDHB12
Isotype:	IgG
Cross-Reactivity:	Human
Purification:	Purified by Protein A.

Target Details

Target:	PCDHB12
Alternative Name:	PCDHB12 (PCDHB12 Products)

Target Details

Background:	<p>Synonyms: PCDH beta12, PCDHB 12, PCDHB12, PCDBC_HUMAN.</p> <p>Background: Protocadherins are a large family of cadherin-like cell adhesion proteins that are involved in the establishment and maintenance of neuronal connections in the brain. There are three protocadherin gene clusters, designated alpha, beta and gamma, all of which contain multiple tandemly arranged genes. PCDHB12 (Protocadherin beta 12) is a 795 amino acid protein that is one of 16 proteins in the protocadherin beta cluster. Unlike the alpha and gamma gene clusters whose genes are spliced to downstream constant region exons during transcription, members of the beta cluster (such as PCDHB12) do not use constant-region exons to produce mRNAs. As a result, each protocadherin beta gene encodes the transmembrane, extracellular and short cytoplasmic domains of the protein. Localized to the cell membrane, PCDHB12 is a single-pass type I membrane protein that contains six cadherin domains. PCDHB12 may participate in the establishment and maintenance of specific neuronal connections in the brain.</p>
-------------	---

Application Details

Application Notes:	<p>WB 1:300-5000</p> <p>ELISA 1:500-1000</p> <p>IHC-P 1:200-400</p> <p>IHC-F 1:100-500</p> <p>IF(IHC-P) 1:50-200</p> <p>IF(IHC-F) 1:50-200</p> <p>IF(ICC) 1:50-200</p> <p>ICC 1:100-500</p>
--------------------	---

Restrictions:	For Research Use only
---------------	-----------------------

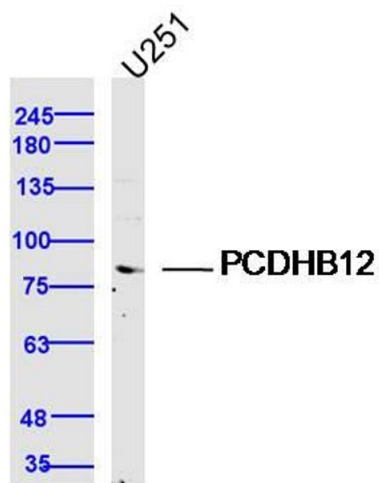
Handling

Format:	Liquid
Concentration:	1 µg/µL
Buffer:	0.01M TBS(pH 7.4) with 1 % BSA, 0.02 % Proclin300 and 50 % Glycerol.
Preservative:	ProClin
Precaution of Use:	This product contains ProClin: a POISONOUS AND HAZARDOUS SUBSTANCE, which should be handled by trained staff only.
Storage:	4 °C,-20 °C

Handling

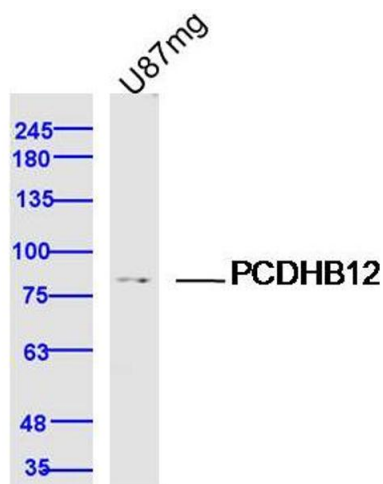
Storage Comment:	Shipped at 4°C. Store at -20°C for one year. Avoid repeated freeze/thaw cycles.
Expiry Date:	12 months

Images



Western Blotting

Image 1. U251 lysates probed with PCDHB12 Polyclonal Antibody, Unconjugated at 1:300 dilution and 4°C overnight incubation. Followed by conjugated secondary antibody incubation at 1:10000 for 60 min at 37°C.



Western Blotting

Image 2. U87MG lysates probed with PCDHB12 Polyclonal Antibody, Unconjugated at 1:300 dilution and 4°C overnight incubation. Followed by conjugated secondary antibody incubation at 1:10000 for 60 min at 37°C.