



[Go to Product page](#)

Datasheet for ABIN1385186

## anti-Complement C4 antibody (AA 701-800)

### 2 Images

#### Overview

Quantity:	100 µL
Target:	Complement C4 (C4)
Binding Specificity:	AA 701-800
Reactivity:	Human
Host:	Rabbit
Clonality:	Polyclonal
Conjugate:	This Complement C4 antibody is un-conjugated
Application:	Immunofluorescence (Paraffin-embedded Sections) (IF (p)), Immunofluorescence (Cultured Cells) (IF (cc)), ELISA, Immunohistochemistry (Frozen Sections) (IHC (fro)), Immunohistochemistry (Paraffin-embedded Sections) (IHC (p))

#### Product Details

Immunogen:	KLH conjugated synthetic peptide derived from human Complement C4 C4a anaphylatoxin or complement C4 alpha chain
Isotype:	IgG
Predicted Reactivity:	Human
Purification:	Purified by Protein A.

#### Target Details

Target:	Complement C4 (C4)
Alternative Name:	Complement C4/C4 ( <a href="#">C4 Products</a> )

## Target Details

---

**Background:** Synonyms: C4a anaphylatoxin, Complement C4-A alpha chain, complement C4-A proprotein, Acidic C4, Acidic complement C4, Basic C4, Basic complement C4, C4 Anaphylatoxin, C4 complement C4d region, complement C4 alpha chain, C4A, C4A13, C4A2, C4A3, C4A4, C4A6, C4A91, C4B, C4B1, C4B12, C4B2, C4B3, C4B5, C4F, C4S, CH, Chido form of C4, CO4, Complement C4 A, Complement C4 B, Complement C4B, Complement component 4A Rodgers blood group, Complement component 4A, Complement component 4B Childo blood group, Complement component 4B, Complement component C4B, CPAMD2, CPAMD3. RG, Rodgers Form Of C4.

**Background:** This gene encodes the acidic form of complement factor 4, part of the classical activation pathway. The protein is expressed as a single chain precursor which is proteolytically cleaved into a trimer of alpha, beta, and gamma chains prior to secretion. The trimer provides a surface for interaction between the antigen-antibody complex and other complement components. The alpha chain may be cleaved to release C4 anaphylatoxin, a mediator of local inflammation. Deficiency of this protein is associated with systemic lupus erythematosus and type I diabetes mellitus. This gene localizes to the major histocompatibility complex (MHC) class III region on chromosome 6. Varying haplotypes of this gene cluster exist, such that individuals may have 1, 2, or 3 copies of this gene. Two transcript variants encoding different isoforms have been found for this gene. [provided by RefSeq, Nov 2011].

---

**Gene ID:** 720, 721

**Pathways:** [Complement System](#)

## Application Details

---

**Application Notes:** ELISA 1:500-1000  
IHC-P 1:200-400  
IHC-F 1:100-500  
IF(IHC-P) 1:50-200  
IF(IHC-F) 1:50-200  
IF(ICC) 1:50-200

---

**Restrictions:** For Research Use only

## Handling

---

**Format:** Liquid

---

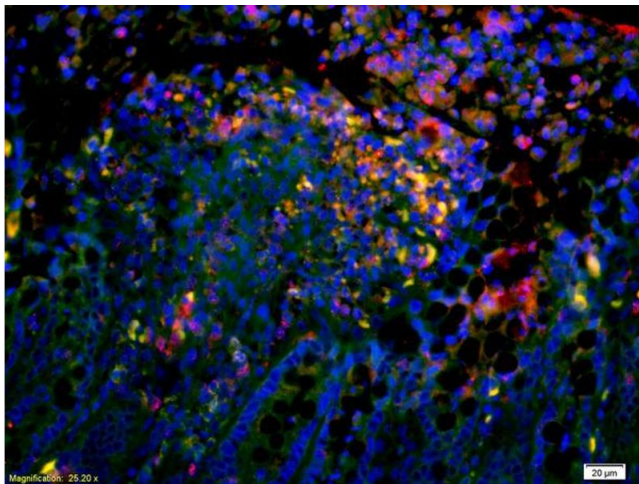
**Concentration:** 1 µg/µL

---

## Handling

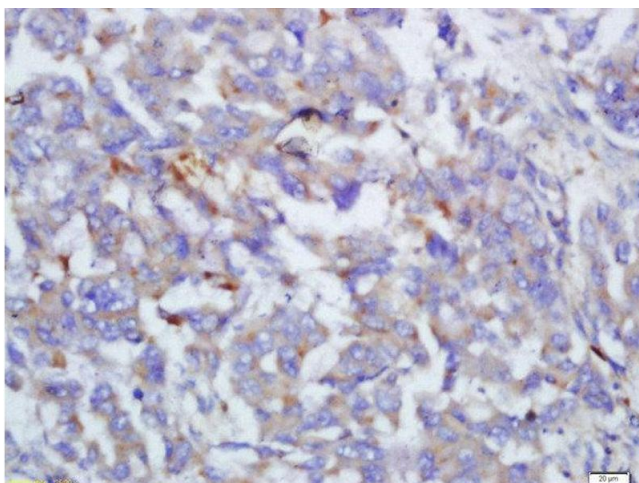
Buffer:	0.01M TBS( pH 7.4) with 1 % BSA, 0.02 % Proclin300 and 50 % Glycerol.
Preservative:	ProClin
Precaution of Use:	This product contains ProClin: a POISONOUS AND HAZARDOUS SUBSTANCE, which should be handled by trained staff only.
Storage:	4 °C,-20 °C
Storage Comment:	Shipped at 4°C. Store at -20°C for one year. Avoid repeated freeze/thaw cycles.
Expiry Date:	12 months

## Images



### Immunofluorescence

**Image 1.** Formalin-fixed and paraffin-embedded mouse intestine labeled with Anti-Complement C4/C4 Polyclonal Antibody, Unconjugated (ABIN1385186) 1:200, overnight at 4°C, The secondary antibody was Goat Anti-Rabbit IgG, Cy3 conjugated used at 1:200 dilution for 40 minutes at 37°C. DAPI was used to stain the cell nuclei



### Immunohistochemistry (Paraffin-embedded Sections)

**Image 2.** Formalin-fixed and paraffin embedded human lung cancer labeled with Anti-Complement C4/C4 Polyclonal Antibody, Unconjugated at 1:200 followed by conjugation to the secondary antibody and DAB staining