

Datasheet for ABIN1385196
anti-GPRC5A antibody (AA 1-33)[Go to Product page](#)

1 Image

Overview

Quantity:	100 µL
Target:	GPRC5A
Binding Specificity:	AA 1-33
Reactivity:	Human
Host:	Rabbit
Clonality:	Polyclonal
Conjugate:	This GPRC5A antibody is un-conjugated
Application:	ELISA, Flow Cytometry (FACS), Immunohistochemistry (Paraffin-embedded Sections) (IHC (p)), Immunocytochemistry (ICC), Immunofluorescence (Cultured Cells) (IF (cc)), Immunofluorescence (Paraffin-embedded Sections) (IF (p)), Immunohistochemistry (Frozen Sections) (IHC (fro))

Product Details

Immunogen:	KLH conjugated synthetic peptide derived from human RAI3
Isotype:	IgG
Cross-Reactivity:	Human
Purification:	Purified by Protein A.

Target Details

Target:	GPRC5A
Alternative Name:	RAI3 (GPRC5A Products)

Target Details

Background:	<p>Synonyms: G protein coupled receptor family C group 5 member A, G-protein coupled receptor family C group 5 member A, GPCR 5A, GPCR5A, Gprc 5a, Gprc5a, Orphan G protein coupling receptor PEIG 1, Orphan G protein coupling receptor PEIG1, Orphan G-protein-coupling receptor PEIG-1, RAI 3, RAI3_HUMAN, Raig 1, RAIG-1, Raig1, Retinoic acid induced 3, Retinoic acid induced gene 1 protein, Retinoic acid induced protein 3, Retinoic acid responsive, Retinoic acid responsive gene, Retinoic acid-induced gene 1 protein, Retinoic acid-induced protein 3.</p> <p>Background: RAI3 is an transmembrane G-protein-coupled receptor that affects many essential biological processes including embryogenesis, cell growth, differentiation, and apoptosis. RAI3 may also be involved in maintaining homeostasis of epithelial cells. Retinoic acid receptors directly regulate RAI3 during its transcription in embryonal carcinoma differentiation. RAI3 expression is upregulated in most tumor cell lines that express mutant p53, suggesting that p53 interacts with the promoter of RAI3 and represses its expression at the beginning of apoptosis. RAI3 is a potential molecular target for diagnosing breast cancer, and selective suppression of signals from RAI3 may have a place in breast cancer treatments.</p>
-------------	---

Application Details

Application Notes:	<p>ELISA 1:500-1000</p> <p>FCM 1:20-100</p> <p>IHC-P 1:200-400</p> <p>IHC-F 1:100-500</p> <p>IF(IHC-P) 1:50-200</p> <p>IF(IHC-F) 1:50-200</p> <p>IF(ICC) 1:50-200</p> <p>ICC 1:100-500</p>
--------------------	--

Restrictions:	For Research Use only
---------------	-----------------------

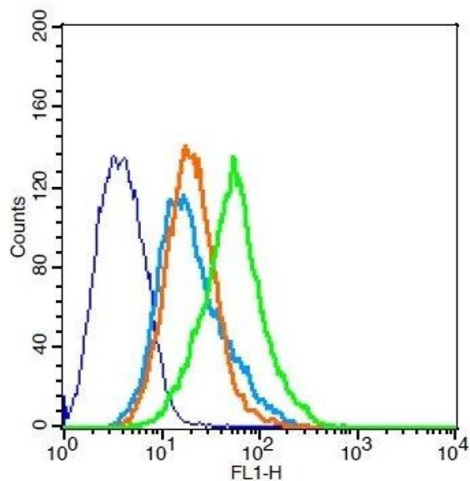
Handling

Format:	Liquid
Concentration:	1 µg/µL
Buffer:	0.01M TBS(pH 7.4) with 1 % BSA, 0.02 % Proclin300 and 50 % Glycerol.
Preservative:	ProClin
Precaution of Use:	This product contains ProClin: a POISONOUS AND HAZARDOUS SUBSTANCE, which should be handled by trained staff only.

Handling

Storage:	4 °C,-20 °C
Storage Comment:	Shipped at 4°C. Store at -20°C for one year. Avoid repeated freeze/thaw cycles.
Expiry Date:	12 months

Images



Flow Cytometry

Image 1. 293FT cells probed with Rabbit Anti-RAI3 Polyclonal Antibody, Unconjugated at 1:20 for 30 minutes followed by incubation with a conjugated secondary -FITC (green) for 30 minutes compared to control cells (blue), secondary only (light blue) and isotype control (orange).