

Datasheet for ABIN1385204
anti-Humanin antibody (AA 1-24)



[Go to Product page](#)

1 Image

Overview

Quantity:	100 µL
Target:	Humanin (MT-RNR2)
Binding Specificity:	AA 1-24
Reactivity:	Human
Host:	Rabbit
Clonality:	Polyclonal
Conjugate:	This Humanin antibody is un-conjugated
Application:	ELISA, Immunofluorescence (Cultured Cells) (IF (cc)), Immunofluorescence (Paraffin-embedded Sections) (IF (p)), Immunohistochemistry (Frozen Sections) (IHC (fro)), Immunohistochemistry (Paraffin-embedded Sections) (IHC (p)), Immunocytochemistry (ICC)

Product Details

Immunogen:	KLH conjugated synthetic peptide derived from human Humanin
Isotype:	IgG
Predicted Reactivity:	Human
Purification:	Purified by Protein A.

Target Details

Target:	Humanin (MT-RNR2)
Alternative Name:	Humanin (MT-RNR2 Products)

Target Details

Background:	<p>Humanin, an endogenous anti-apoptotic peptide against Alzheimer disease-related insults, consists of 24 amino acids. The secreted protein is a neuroprotective factor against death induced by several different types of Alzheimer's disease genes. Humanin protects neuronal cells from damage caused by Alzheimer's disease genes, specifically APP (amyloid precursor protein). Humanin acts as a ligand for formyl peptide receptor-like 1 (FPRL1) with APP and utilizes its neuroprotective effects by inhibiting FPRL1 access to APP. The peptide prevents Bax translocation from cytosol to mitochondria. Humanin expression levels may be dependent on defects in energy production in muscles with mitochondrial abnormalities. The peptide has been detected in muscles of patients with the mitochondrial disease chronic progressive external ophthalmoplegia (CPEO). Humanin is mainly expressed in the kidney, heart, liver, testis and skeletal muscles.</p> <p>Subcellular location: Secreted</p> <p>Synonyms: HN,HUNIN, HUNIN_HUMAN.</p>
-------------	---

Application Details

Application Notes:	<p>ELISA 1:500-1000</p> <p>IHC-P 1:200-400</p> <p>IHC-F 1:100-500</p> <p>IF(IHC-P) 1:50-200</p> <p>IF(IHC-F) 1:50-200</p> <p>IF(ICC) 1:50-200</p> <p>ICC 1:100-500</p>
--------------------	--

Restrictions:	For Research Use only
---------------	-----------------------

Handling

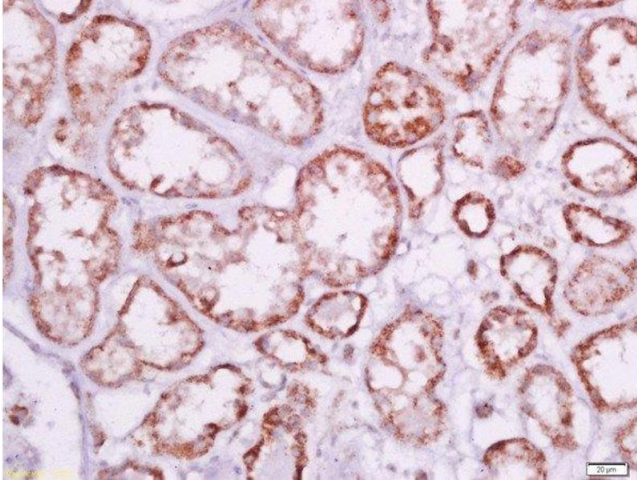
Format:	Liquid
Concentration:	1 µg/µL
Buffer:	0.01M TBS(pH 7.4) with 1 % BSA, 0.03 % Proclin300 and 50 % Glycerol.
Preservative:	ProClin
Precaution of Use:	This product contains ProClin: a POISONOUS AND HAZARDOUS SUBSTANCE, which should be handled by trained staff only.
Storage:	-20 °C

Handling

Storage Comment: Store at -20°C for one year. Avoid repeated freeze/thaw cycles.

Expiry Date: 12 months

Images



Immunohistochemistry (Paraffin-embedded Sections)

Image 1. Paraformaldehyde-fixed, paraffin embedded human kidney tissue, Antigen retrieval by boiling in sodium citrate buffer(pH6) for 15min, Block endogenous peroxidase by 3% hydrogen peroxide for 30 minutes, Blocking buffer (normal goat serum) at 37°C for 20min, Antibody incubation with Rabbit Anti-Humanin Polyclonal Antibody, Unconjugated at 1:500 overnight at 4°C, followed by a conjugated secondary and DAB staining