

Datasheet for ABIN1385227
anti-P2RY8 antibody (AA 131-230)[Go to Product page](#)

1 Image

Overview

Quantity:	100 µL
Target:	P2RY8
Binding Specificity:	AA 131-230
Reactivity:	Human
Host:	Rabbit
Clonality:	Polyclonal
Conjugate:	This P2RY8 antibody is un-conjugated
Application:	Western Blotting (WB), ELISA, Flow Cytometry (FACS), Immunohistochemistry (Paraffin-embedded Sections) (IHC (p)), Immunofluorescence (Cultured Cells) (IF (cc)), Immunofluorescence (Paraffin-embedded Sections) (IF (p)), Immunocytochemistry (ICC), Immunohistochemistry (Frozen Sections) (IHC (fro))

Product Details

Immunogen:	KLH conjugated synthetic peptide derived from human P2Y8
Isotype:	IgG
Cross-Reactivity:	Human
Purification:	Purified by Protein A.

Target Details

Target:	P2RY8
Alternative Name:	P2Y8 (P2RY8 Products)

Target Details

Background:	<p>Synonyms: P2RY8, P2Y receptor family member 8, P2RY8_HUMAN, P2Y purinoceptor 8, P2Y8, Purinergic receptor P2Y G protein coupled 8.</p> <p>Background: G protein-coupled receptors (GPRs), also known as seven transmembrane receptors, heptahelical receptors or 7TM receptors, comprise a superfamily of proteins that play a role in many different stimulus-response pathways. G-protein coupled receptors translate extracellular signals into intracellular signals (G-protein activation) and they respond to a variety of signaling molecules, such as hormones and neurotransmitters. P2RY8 (purinergic receptor P2Y, G-protein coupled, 8), also known as P2Y8, is a 359 amino acid multi-pass membrane protein that localizes to the cell membrane and belongs to the G protein-coupled receptor family. Expressed at low levels in lung, heart and kidney, P2RY8 may function as a receptor for purines that are coupled to G proteins and may also play a role in mental retardation.</p>
-------------	--

Gene ID:	286530
----------	--------

UniProt:	Q86VZ1
----------	------------------------

Application Details

Application Notes:	WB 1:300-5000 ELISA 1:500-1000 FCM 1:20-100 IHC-P 1:200-400 IHC-F 1:100-500 IF(IHC-P) 1:50-200 IF(IHC-F) 1:50-200 IF(ICC) 1:50-200 ICC 1:100-500
--------------------	--

Restrictions:	For Research Use only
---------------	-----------------------

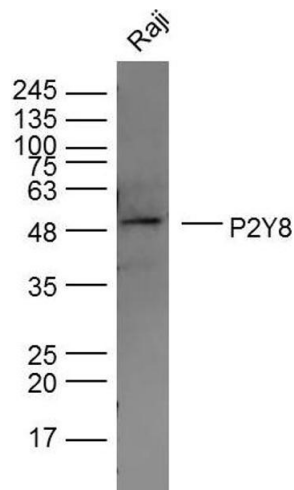
Handling

Format:	Liquid
Concentration:	1 µg/µL
Buffer:	0.01M TBS(pH 7.4) with 1 % BSA, 0.02 % Proclin300 and 50 % Glycerol.
Preservative:	ProClin
Precaution of Use:	This product contains ProClin: a POISONOUS AND HAZARDOUS SUBSTANCE, which should be

Handling

	handled by trained staff only.
Storage:	4 °C,-20 °C
Storage Comment:	Shipped at 4°C. Store at -20°C for one year. Avoid repeated freeze/thaw cycles.
Expiry Date:	12 months

Images



Western Blotting

Image 1. Raji lysates probed with P2Y8 Polyclonal Antibody, Unconjugated at 1:300 dilution and 4°C overnight incubation. Followed by conjugated secondary antibody incubation at 1:10000 for 60 min at 37°C.