



[Go to Product page](#)

Datasheet for ABIN1385261  
**anti-CTAG1B antibody (AA 81-180)**

1 Image

### Overview

Quantity:	100 µL
Target:	CTAG1B
Binding Specificity:	AA 81-180
Reactivity:	Mouse
Host:	Rabbit
Clonality:	Polyclonal
Conjugate:	This CTAG1B antibody is un-conjugated
Application:	Western Blotting (WB), Immunofluorescence (Cultured Cells) (IF (cc)), Immunofluorescence (Paraffin-embedded Sections) (IF (p)), Immunohistochemistry (Paraffin-embedded Sections) (IHC (p)), ELISA, Immunohistochemistry (Frozen Sections) (IHC (fro))

### Product Details

Immunogen:	KLH conjugated synthetic peptide derived from human Cancer/testis antigen 1
Isotype:	IgG
Specificity:	Due to the homology of this protein to related protein CTAG2, there is a chance that this antibody will have a secondary cross-reaction with this the protein as well, based upon sequence similarity..
Cross-Reactivity:	Mouse
Predicted Reactivity:	Human
Purification:	Purified by Protein A.

## Target Details

---

Target:	CTAG1B
Alternative Name:	CTAG1 ( <a href="#">CTAG1B Products</a> )
Background:	<p>Synonyms: CTAG, ESO1, CT6.1, CTAG1, LAGE-2, LAGE2B, NY-ESO-1, Cancer/testis antigen 1, Autoimmunogenic cancer/testis antigen NY-ESO-1, Cancer/testis antigen 6.1, L antigen family member 2, CTAG1A, LAGE2, LAGE2A</p> <p>Background: The protein encoded by this gene is an antigen that is overexpressed in many cancers but that is also expressed in normal testis. This gene is found in a duplicated region of the X-chromosome and therefore has a neighboring gene of identical sequence. [provided by RefSeq, Jan 2012]</p>
Gene ID:	1485
UniProt:	<a href="#">P78358</a>

## Application Details

---

Application Notes:	WB 1:300-5000 ELISA 1:500-1000 IHC-P 1:200-400 IHC-F 1:100-500 IF(IHC-P) 1:50-200 IF(IHC-F) 1:50-200 IF(ICC) 1:50-200
Restrictions:	For Research Use only

## Handling

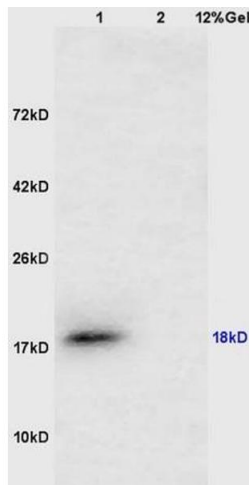
---

Format:	Liquid
Concentration:	1 µg/µL
Buffer:	0.01M TBS( pH 7.4) with 1 % BSA, 0.02 % Proclin300 and 50 % Glycerol.
Preservative:	ProClin
Precaution of Use:	This product contains ProClin: a POISONOUS AND HAZARDOUS SUBSTANCE, which should be handled by trained staff only.
Storage:	4 °C,-20 °C
Storage Comment:	Shipped at 4°C. Store at -20°C for one year. Avoid repeated freeze/thaw cycles.

## Handling

Expiry Date: 12 months

## Images



### SDS-PAGE

**Image 1.** Lane 1: mouse testis lysates Lane 2: mouse lung lysates probed with Anti CTAG1B/Cancer/testis antigen 1 Polyclonal Antibody, Unconjugated (ABIN1385261) at 1:200 in 4 °C. Followed by conjugation to secondary antibody at 1:3000 90min in 37 °C. Predicted band 18kD. Observed band size: 18kD.