

Datasheet for ABIN1385277

**anti-alpha Fetoprotein antibody (AA 501-609)**[Go to Product page](#)**1** Image**1** Publication

## Overview

Quantity:	100 µL
Target:	alpha Fetoprotein (AFP)
Binding Specificity:	AA 501-609
Reactivity:	Human
Host:	Rabbit
Clonality:	Polyclonal
Conjugate:	This alpha Fetoprotein antibody is un-conjugated
Application:	Western Blotting (WB), ELISA, Immunohistochemistry (Paraffin-embedded Sections) (IHC (p)), Immunofluorescence (Paraffin-embedded Sections) (IF (p)), Immunohistochemistry (Frozen Sections) (IHC (fro)), Immunofluorescence (Cultured Cells) (IF (cc))

## Product Details

Immunogen:	KLH conjugated synthetic peptide derived from human Alpha Fetoprotein
Isotype:	IgG
Cross-Reactivity:	Human
Purification:	Purified by Protein A.

## Target Details

Target:	alpha Fetoprotein (AFP)
Alternative Name:	AFP ( <a href="#">AFP Products</a> )

## Target Details

Background:	<p>Synonyms: Alpha Fetoprotein, Alpha-fetoprotein, AFP, alpha 1 fetoprotein, Alpha-1-fetoprotein, Alpha-fetoglobulin, alpha fetoglobulin, alpha Fetoprotein, Alpha fetoprotein precursor, FETA, HPAFP, FETA_HUMAN.</p> <p>Background: Alpha 1 Fetoprotein is a major plasma protein produced by the yolk sac and the liver during fetal life. Alpha fetoprotein expression in adults is often associated with hepatoma or teratoma. However, hereditary persistence of alpha-fetoprotein may also be found in individuals with no obvious pathology. The protein is thought to be the fetal counterpart of serum albumin, and the alpha fetoprotein and albumin genes are present in tandem in the same transcriptional orientation on chromosome 4. Alpha fetoprotein is found in monomeric as well as dimeric and trimeric forms, and binds copper, nickel, fatty acids and bilirubin. The level of alpha fetoprotein in amniotic fluid is used to measure renal loss of protein to screen for spina bifida and anencephaly. Expression has been documented in human adrenal, liver, ovary, testis, and pancreas. ESTs have been isolated from normal human brain, liver/spleen, embryo and uterus tissue libraries.</p>
Gene ID:	174
UniProt:	<a href="#">P02771</a>
Pathways:	<a href="#">C21-Steroid Hormone Metabolic Process</a>

## Application Details

Application Notes:	WB 1:300-5000 ELISA 1:500-1000 IHC-P 1:200-400 IHC-F 1:100-500 IF(IHC-P) 1:50-200 IF(IHC-F) 1:50-200 IF(ICC) 1:50-200
Restrictions:	For Research Use only

## Handling

Format:	Liquid
Concentration:	1 µg/µL
Buffer:	0.01M TBS( pH 7.4) with 1 % BSA, 0.02 % Proclin300 and 50 % Glycerol.

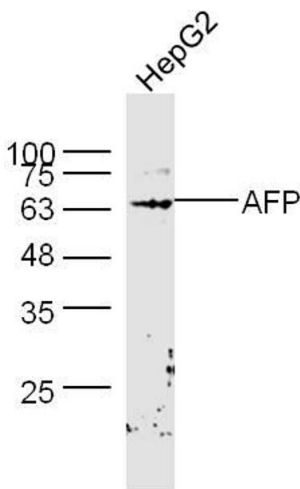
## Handling

Preservative:	ProClin
Precaution of Use:	This product contains ProClin: a POISONOUS AND HAZARDOUS SUBSTANCE, which should be handled by trained staff only.
Storage:	4 °C,-20 °C
Storage Comment:	Shipped at 4°C. Store at -20°C for one year. Avoid repeated freeze/thaw cycles.
Expiry Date:	12 months

## Publications

Product cited in:	Mo, He, Zhou, Ya, Feng, Yu, Deng: "A novel ECL sensor based on a boronate affinity molecular imprinting technique and functionalized SiO <sub>2</sub> @CQDs/AuNPs/MPBA nanocomposites for sensitive determination of alpha-fetoprotein." in: <b>Biosensors &amp; bioelectronics</b> , Vol. 126, pp. 558-564, (2019) ( <a href="#">PubMed</a> ).
-------------------	---

## Images



### Western Blotting

**Image 1.** HepG2 lysates probed with AFP Polyclonal Antibody, Unconjugated at 1:300 dilution and 4°C overnight incubation. Followed by conjugated secondary antibody incubation at 1:10000 for 60 min at 37°C.