

Datasheet for ABIN1385282

anti-Complement C3b antibody (AA 581-667)[1 Image](#)[1 Publication](#)[Go to Product page](#)

Overview

| | |
|----------------------|--|
| Quantity: | 100 µL |
| Target: | Complement C3b (C3b) |
| Binding Specificity: | AA 581-667 |
| Reactivity: | Human, Mouse |
| Host: | Rabbit |
| Clonality: | Polyclonal |
| Conjugate: | This Complement C3b antibody is un-conjugated |
| Application: | Western Blotting (WB), Immunohistochemistry (Frozen Sections) (IHC (fro)), ELISA |

Product Details

| | |
|-----------------------|--|
| Immunogen: | KLH conjugated synthetic peptide derived from human Complement C3 beta chain |
| Isotype: | IgG |
| Specificity: | This antibody could recognize C3-beta-c |
| Cross-Reactivity: | Human, Mouse |
| Predicted Reactivity: | Rat,Dog,Cow,Pig,Horse,Guinea Pig |
| Purification: | Purified by Protein A. |

Target Details

| | |
|-------------------|---|
| Target: | Complement C3b (C3b) |
| Alternative Name: | Complement C3 beta chain (C3b Products) |

Target Details

| | |
|-------------|--|
| Background: | <p>Synonyms: ASP, C3a, C3b, AHUS5, ARMD9, CPAMD1, HEL-S-62p, Complement C3, C3 and PZP-like alpha-2-macroglobulin domain-containing protein 1, C3, CO3_HUMAN</p> <p>Background: C3 plays a central role in the activation of the complement system. Its processing by C3 convertase is the central reaction in both classical and alternative complement pathways. After activation C3b can bind covalently, via its reactive thioester, to cell surface carbohydrates or immune aggregates. Derived from proteolytic degradation of complement C3, C3a anaphylatoxin is a mediator of local inflammatory process. In chronic inflammation, acts as a chemoattractant for neutrophils (By similarity). It induces the contraction of smooth muscle, increases vascular permeability and causes histamine release from mast cells and basophilic leukocytes. C3-beta-c: Acts as a chemoattractant for neutrophils in chronic inflammation. Acylation stimulating protein: adipogenic hormone that stimulates triglyceride (TG) synthesis and glucose transport in adipocytes, regulating fat storage and playing a role in postprandial TG clearance. Appears to stimulate TG synthesis via activation of the PLC, MAPK and AKT signaling pathways. Ligand for C5AR2. Promotes the phosphorylation, ARRB2-mediated internalization and recycling of C5AR2 (PubMed:8376604, PubMed:2909530, PubMed:9059512, PubMed:10432298, PubMed:15833747, PubMed:16333141, PubMed:19615750).</p> |
| Gene ID: | 718 |
| UniProt: | P01024 |
| Pathways: | Complement System , Regulation of Leukocyte Mediated Immunity , Positive Regulation of Immune Effector Process , Regulation of G-Protein Coupled Receptor Protein Signaling |

Application Details

| | |
|--------------------|--|
| Application Notes: | WB 1:300-5000 ELISA 1:500-1000 IHC-F 1:100-500 |
| Restrictions: | For Research Use only |

Handling

| | |
|----------------|---|
| Format: | Liquid |
| Concentration: | 1 µg/µL |
| Buffer: | 0.01M TBS(pH 7.4) with 1 % BSA, 0.02 % Proclin300 and 50 % Glycerol. |

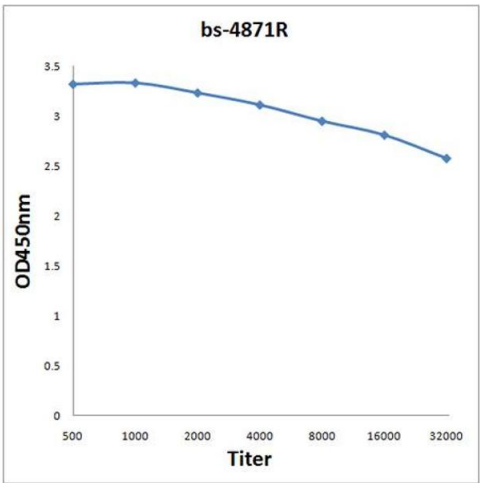
Handling

| | |
|--------------------|--|
| Preservative: | ProClin |
| Precaution of Use: | This product contains ProClin: a POISONOUS AND HAZARDOUS SUBSTANCE, which should be handled by trained staff only. |
| Storage: | 4 °C,-20 °C |
| Storage Comment: | Shipped at 4°C. Store at -20°C for one year. Avoid repeated freeze/thaw cycles. |
| Expiry Date: | 12 months |

Publications

| | |
|-------------------|--|
| Product cited in: | Magliarelli, Matondo, Mészáros, Goginashvili, Erbs, Zhang, Mihlan, Wolfrum, Aebersold, Sumara, Ricci: "Liver ubiquitome uncovers nutrient-stress-mediated trafficking and secretion of complement C3." in: Cell death & disease , Vol. 7, Issue 10, pp. e2411, (2016) (PubMed). |
|-------------------|--|

Images



ELISA

Image 1. Antigen: 0.2 µg/100 µL Primary: Antiserum, 1:500, 1:1000, 1:2000, 1:4000, 1:8000, 1:16000, 1:32000; Secondary: HRP conjugated Goat-Anti-Rabbit IgG at 1: 5000; TMB staining; Read the data in MicroplateReader by 450