



[Go to Product page](#)

Datasheet for ABIN1385316

anti-Fc epsilon RI/FCER1A antibody (AA 101-220)

1 Image

Overview

Quantity:	100 µL
Target:	Fc epsilon RI/FCER1A (FCER1A)
Binding Specificity:	AA 101-220
Reactivity:	Human
Host:	Rabbit
Clonality:	Polyclonal
Conjugate:	This Fc epsilon RI/FCER1A antibody is un-conjugated
Application:	Western Blotting (WB), ELISA, Immunocytochemistry (ICC), Immunohistochemistry (Paraffin-embedded Sections) (IHC (p)), Immunofluorescence (Cultured Cells) (IF (cc)), Immunofluorescence (Paraffin-embedded Sections) (IF (p)), Immunohistochemistry (Frozen Sections) (IHC (fro))

Product Details

Immunogen:	KLH conjugated synthetic peptide derived from human FCER1A
Isotype:	IgG
Cross-Reactivity:	Human
Purification:	Purified by Protein A.

Target Details

Target:	Fc epsilon RI/FCER1A (FCER1A)
Abstract:	FCER1A Products

Target Details

Background:	<p>Synonyms: FCE1A, FcERI, High affinity immunoglobulin epsilon receptor subunit alpha, Fc-epsilon RI-alpha, IgE Fc receptor subunit alpha, FCER1A</p> <p>Background: Binds to the Fc region of immunoglobulins epsilon. High affinity receptor. Responsible for initiating the allergic response. Binding of allergen to receptor-bound IgE leads to cell activation and the release of mediators (such as histamine) responsible for the manifestations of allergy. The same receptor also induces the secretion of important lymphokines.</p>
Gene ID:	2205
UniProt:	P12319
Pathways:	Fc-epsilon Receptor Signaling Pathway , Regulation of Leukocyte Mediated Immunity , Positive Regulation of Immune Effector Process

Application Details

Application Notes:	<p>WB 1:300-5000</p> <p>ELISA 1:500-1000</p> <p>IHC-P 1:200-400</p> <p>IHC-F 1:100-500</p> <p>IF(IHC-P) 1:50-200</p> <p>IF(IHC-F) 1:50-200</p> <p>IF(ICC) 1:50-200</p> <p>ICC 1:100-500</p>
Restrictions:	For Research Use only

Handling

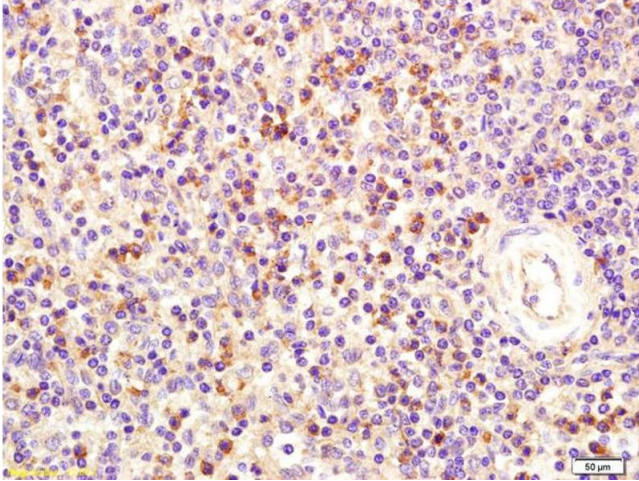
Format:	Liquid
Concentration:	1 µg/µL
Buffer:	0.01M TBS(pH 7.4) with 1 % BSA, 0.02 % Proclin300 and 50 % Glycerol.
Preservative:	ProClin
Precaution of Use:	This product contains ProClin: a POISONOUS AND HAZARDOUS SUBSTANCE, which should be handled by trained staff only.
Storage:	4 °C,-20 °C

Handling

Storage Comment: Shipped at 4°C. Store at -20°C for one year. Avoid repeated freeze/thaw cycles.

Expiry Date: 12 months

Images



Immunohistochemistry

Image 1. Formalin-fixed and paraffin embedded human spleen labeled with Anti- Fc γ RI/ γ epsilon RI Polyclonal Antibody, Unconjugated (ABIN1385316) at 1:200 followed by conjugation to the secondary antibody and DAB staining