



[Go to Product page](#)

Datasheet for ABIN1385317
anti-SPP2 antibody (AA 55-160)

3 Images

Overview

Quantity:	100 µL
Target:	SPP2
Binding Specificity:	AA 55-160
Reactivity:	Rat
Host:	Rabbit
Clonality:	Polyclonal
Conjugate:	This SPP2 antibody is un-conjugated
Application:	Western Blotting (WB), Immunofluorescence (Cultured Cells) (IF (cc)), Immunofluorescence (Paraffin-embedded Sections) (IF (p)), ELISA, Immunohistochemistry (Frozen Sections) (IHC (fro)), Immunohistochemistry (Paraffin-embedded Sections) (IHC (p))

Product Details

Immunogen:	KLH conjugated synthetic peptide derived from human SPP24/SPP2
Isotype:	IgG
Cross-Reactivity:	Rat
Predicted Reactivity:	Human
Purification:	Purified by Protein A.

Target Details

Target:	SPP2
---------	------

Target Details

Alternative Name: SPP24 ([SPP2 Products](#))

Background: Synonyms: SPP24, SPP-24, Secreted phosphoprotein 24, Secreted phosphoprotein 2, SPP2
Background: SPP24, also known as secreted phosphoprotein 2, is a 211 amino acid secreted protein that belongs to the cystatin superfamily. Expressed in liver and plasma, SPP24 may play a role in coordinating an aspect of bone turnover. The gene that encodes SPP24 maps to human chromosome 2, which consists of 237 million bases encoding over 1,400 genes, making up approximately 8 % of the human genome. A number of genetic diseases are linked to genes on chromosome 2. Harlequin ichthyosis, a rare and morbid skin deformity, is associated with mutations in the ABCA12 gene. The lipid metabolic disorder sitosterolemia is associated with ABCG5 and ABCG8. An extremely rare recessive genetic disorder, Alstr syndrome is due to mutations in the ALMS1 gene. Interestingly, chromosome 2 contains what appears to be a vestigial second centromere and vestigial telomeres which gives credence to the hypothesis that human chromosome 2 is the result of an ancient fusion of two ancestral chromosomes seen in modern form today in apes.

Gene ID: 6694

UniProt: [Q13103](#)

Application Details

Application Notes: WB 1:300-5000
ELISA 1:500-1000
IHC-P 1:200-400
IHC-F 1:100-500
IF(IHC-P) 1:50-200
IF(IHC-F) 1:50-200
IF(ICC) 1:50-200

Restrictions: For Research Use only

Handling

Format: Liquid

Concentration: 1 µg/µL

Buffer: 0.01M TBS(pH 7.4) with 1 % BSA, 0.02 % Proclin300 and 50 % Glycerol.

Preservative: ProClin

Handling

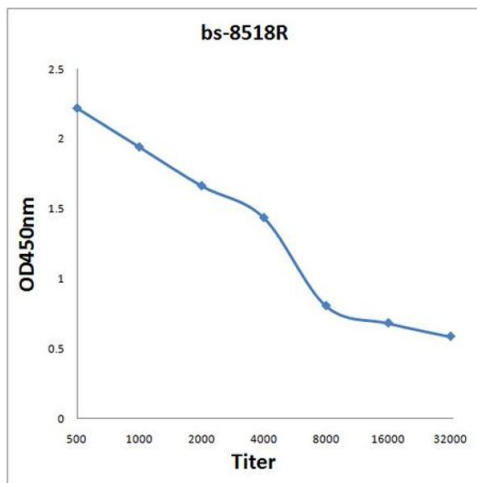
Precaution of Use: This product contains ProClin: a POISONOUS AND HAZARDOUS SUBSTANCE, which should be handled by trained staff only.

Storage: 4 °C, -20 °C

Storage Comment: Shipped at 4°C. Store at -20°C for one year. Avoid repeated freeze/thaw cycles.

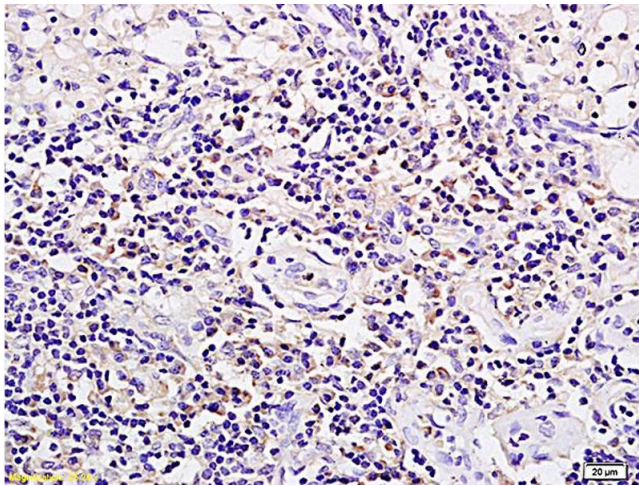
Expiry Date: 12 months

Images



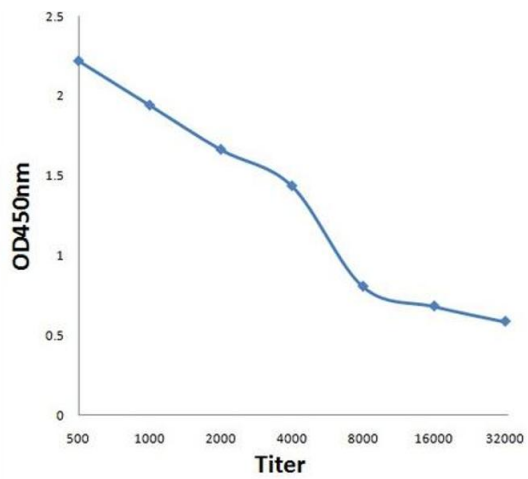
ELISA

Image 1. Antigen: 2 µg/100 µL Primary: Antiserum, 1:500, 1:1000, 1:2000, 1:4000, 1:8000, 1:16000, 1:32000; Secondary: HRP conjugated Rabbit Anti-Goat IgG at 1: 5000; TMB staining Read the data in Microplate Reader by 450nm.



Immunohistochemistry

Image 2. Formalin-fixed and paraffin embedded rat xenograft tumor tissue labeled with Anti SPP24/SPP2 Polyclonal Antibody, Unconjugated (ABIN1385317) followed by conjugation to the secondary antibody and DAB staining



ELISA

Image 3. Antigen: 0.2ug/100ul, Primary: Antiserum, 1:500, 1:1000, 1:2000, 1:4000, 1:8000, 1:16000, 1:32000, Secondary: HRP conjugated Goat-Anti-Rabbit IgG at 1: 5000, TMB staining, Read the data in MicroplateReader by 450nm