



Datasheet for ABIN1385431

anti-CXX1 antibody



[Go to Product page](#)

1 Image

1 Publication

Overview

Quantity:	100 µL
Target:	CXX1 (FAM127A)
Reactivity:	Human, Mouse, Rat
Host:	Rabbit
Clonality:	Polyclonal
Conjugate:	This CXX1 antibody is un-conjugated
Application:	Western Blotting (WB), Immunofluorescence (Paraffin-embedded Sections) (IF (p)), Flow Cytometry (FACS), Immunohistochemistry (Paraffin-embedded Sections) (IHC (p))

Product Details

Immunogen:	KLH conjugated synthetic peptide derived from human CXX1/Cerebral protein 5
Isotype:	IgG
Cross-Reactivity:	Human, Mouse, Rat
Purification:	Purified by Protein A.

Target Details

Target:	CXX1 (FAM127A)
Alternative Name:	Cerebral protein 5 (FAM127A Products)
Background:	Synonyms: Mammalian retrotransposon derived protein 8C, CAAX box protein 1, Cerebral protein 5, CXX 1, FAM127A, Family with sequence similarity 127, member A, Mar8, MAR8C, Mart8, F127A_HUMAN.

Target Details

Background: The X and Y chromosomes are the human sex chromosomes. Chromosome X consists of about 153 million base pairs and nearly 1,000 genes. The combination of an X and Y chromosome lead to normal male development while two copies of X lead to normal female development. There are a number of conditions related to an unusual number and combination of sex chromosomes being inherited. More than one copy of the X chromosome with a Y chromosome causes Klinefelter's syndrome. A single copy of X alone leads to Turner's syndrome. More than 2 copies of the X chromosome, in the absence of a Y chromosome, is known as Triple X syndrome. Color blindness, hemophilia, and Duchenne muscular dystrophy are well known X chromosome-linked conditions which affect males more frequently as males carry a single X chromosome. The CXX1 gene product has been provisionally designated CXX1 pending further characterization.

Gene ID: 8933

Application Details

Application Notes: WB 1:300-5000
FCM 1:20-100
IHC-P 1:200-400
IF(IHC-P) 1:50-200

Restrictions: For Research Use only

Handling

Format: Liquid

Concentration: 1 µg/µL

Buffer: 0.01M TBS(pH 7.4) with 1 % BSA, 0.02 % Proclin300 and 50 % Glycerol.

Preservative: ProClin

Precaution of Use: This product contains ProClin: a POISONOUS AND HAZARDOUS SUBSTANCE, which should be handled by trained staff only.

Storage: 4 °C,-20 °C

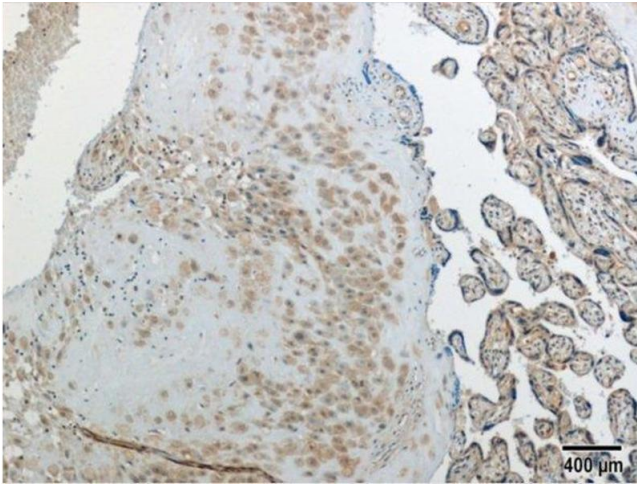
Storage Comment: Shipped at 4°C. Store at -20°C for one year. Avoid repeated freeze/thaw cycles.

Expiry Date: 12 months

Publications

Product cited in: Henke, Strissel, Schubert, Mitchell, Stolt, Faschingbauer, Beckmann, Strick: "Selective expression of sense and antisense transcripts of the sushi-ichi-related retrotransposon-derived family during mouse placentogenesis." in: **Retrovirology**, Vol. 12, pp. 9, (2015) ([PubMed](#)).

Images



Immunohistochemistry (Paraffin-embedded Sections)

Image 1. This image was generously provided by Drs. Reiner Strick and Christine Henke at the University-Clinic Erlangen. Human placenta labeled with Rabbit Anti-Cerebral protein 5 Polyclonal Antibody, Unconjugated .