

Datasheet for ABIN1385515 **anti-BLOC1S4 antibody**



[Go to Product page](#)

1 Image

Overview

Quantity:	100 µL
Target:	BLOC1S4 (CNO)
Reactivity:	Human, Mouse, Rat
Host:	Rabbit
Clonality:	Polyclonal
Conjugate:	This BLOC1S4 antibody is un-conjugated
Application:	Western Blotting (WB), Immunofluorescence (Paraffin-embedded Sections) (IF (p)), Immunohistochemistry (Paraffin-embedded Sections) (IHC (p))

Product Details

Immunogen:	KLH conjugated synthetic peptide derived from human CNO/Cappuccino
Isotype:	IgG
Cross-Reactivity:	Human, Mouse, Rat
Purification:	Purified by Protein A.

Target Details

Target:	BLOC1S4 (CNO)
Alternative Name:	Cappuccino (CNO Products)
Background:	Synonyms: Cappuccino, Cappuccino homolog, Cappuccino homolog, FLJ11230, Protein cappuccino, Protein cappuccino homolog, BL1S4_HUMAN, Biogenesis of lysosome-related organelles complex 1 subunit 4, BLOC-1 subunit 4, BLOC1S4, BCAS4L, CNO.

Target Details

Background: Biogenesis of lysosome-related organelles complex-1 (BLOC-1) is a multisubunit protein necessary for biogenesis of specialized organelles of the endosomal-lysosomal system (such as melanosomes and platelet-dense granules). The complex consists of coiled-coil-forming proteins Snapin, Pallidin, Cappuccino, Muted, BLOS1, BLOS2, and BLOS3. The localization of these proteins varies as they can be cytoplasmic, peripheral membrane bound or anchored to the vesicular membrane. Cappuccino, a primarily cytoplasmic protein, plays a role in the development of melanosomes, platelet-dense granules and other lysosome-related organelles. It interacts primarily with pallidin and Muted and has been implicated as an actin-nucleation factor that may play a role in crosstalk between microfilaments and microtubules.

Application Details

Application Notes: WB 1:300-5000
IHC-P 1:200-400
IF(IHC-P) 1:50-200

Restrictions: For Research Use only

Handling

Format: Liquid

Concentration: 1 µg/µL

Buffer: 0.01M TBS(pH 7.4) with 1 % BSA, 0.02 % Proclin300 and 50 % Glycerol.

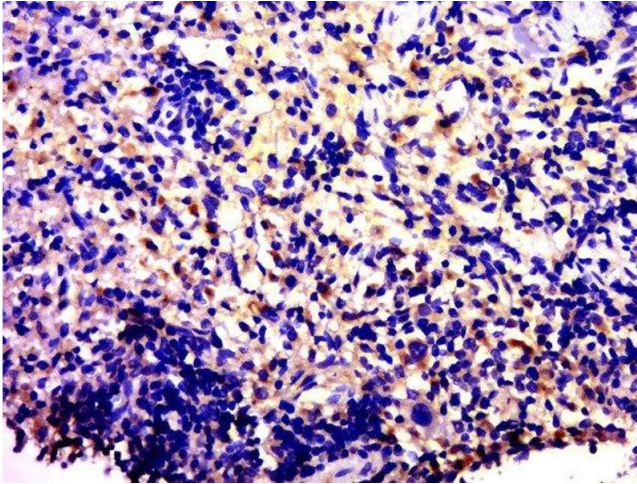
Preservative: ProClin

Precaution of Use: This product contains ProClin: a POISONOUS AND HAZARDOUS SUBSTANCE, which should be handled by trained staff only.

Storage: 4 °C,-20 °C

Storage Comment: Shipped at 4°C. Store at -20°C for one year. Avoid repeated freeze/thaw cycles.

Expiry Date: 12 months



Immunohistochemistry (Paraffin-embedded Sections)

Image 1. Paraformaldehyde-fixed, paraffin embedded rat spleen tissue, Antigen retrieval by boiling in sodium citrate buffer(pH6) for 15min, Block endogenous peroxidase by 3% hydrogen peroxide for 30 minutes, Blocking buffer (normal goat serum) at 37°C for 20min, Antibody incubation with Rabbit Anti-Cappuccino Polyclonal Antibody, Unconjugated at 1:500 overnight at 4°C, followed by a conjugated secondary and DAB staining