

Datasheet for ABIN1385613
anti-Midline 2 antibody (AA 251-350)[Go to Product page](#)

2 Images

Overview

Quantity:	100 µL
Target:	Midline 2 (MID2)
Binding Specificity:	AA 251-350
Reactivity:	Human
Host:	Rabbit
Clonality:	Polyclonal
Conjugate:	This Midline 2 antibody is un-conjugated
Application:	ELISA, Immunofluorescence (Cultured Cells) (IF (cc)), Immunofluorescence (Paraffin-embedded Sections) (IF (p)), Immunohistochemistry (Paraffin-embedded Sections) (IHC (p)), Immunohistochemistry (Frozen Sections) (IHC (fro)), Immunocytochemistry (ICC)

Product Details

Immunogen:	KLH conjugated synthetic peptide derived from human RNF60/Midline-2
Isotype:	IgG
Cross-Reactivity:	Human
Predicted Reactivity:	Mouse,Rat,Dog,Sheep,Pig,Horse,Chicken
Purification:	Purified by Protein A.

Target Details

Target:	Midline 2 (MID2)
---------	------------------

Target Details

Alternative Name: RNF60/Midline-2 ([MID2 Products](#))

Background: Synonyms: FXY2, MID2, Midin-2, Midline 2, Midline defect 2, Midline-2, Probable E3 ubiquitin-protein ligase MID2, RING finger protein 60, Ring finger protein protein 60, RNF60, TRIM1, TRIM1_HUMAN, Tripartite mot protein 1, Tripartite mot-containing protein 1, Tripartite mot-containing protein 1, Midline defect 2, FLJ37715, FLJ41813.

Background: Midline-2 is a 715 amino acid protein encoded by the human gene MID2. Midline-2 belongs to the TRIM/RBCC family and contains two B box-type zinc fingers, one B30.2/SPRY domain, one COS domain, one fibronectin type-III domain and one RING-type zinc finger.

Midline-2 is a cytoplasmic protein found as a homodimer or heterodimer with Midline-1. It also interacts with IGBP1 (Lymphocyte signaling protein A4). Dimerization is mediated by the tripartite motif (RBCC, RING- and B box-type zinc fingers and coiled coil domains) and microtubule association is dependent on the C-terminal B30.2 domain. Midline-2 is expressed at low levels in fetal kidney and lung, and in adult prostate, ovary and small intestine.

Gene ID: 26040

Application Details

Application Notes: ELISA 1:500-1000
IHC-P 1:200-400
IHC-F 1:100-500
IF(IHC-P) 1:50-200
IF(IHC-F) 1:50-200
IF(ICC) 1:50-200
ICC 1:100-500

Restrictions: For Research Use only

Handling

Format: Liquid

Concentration: 1 µg/µL

Buffer: 0.01M TBS(pH 7.4) with 1 % BSA, 0.02 % Proclin300 and 50 % Glycerol.

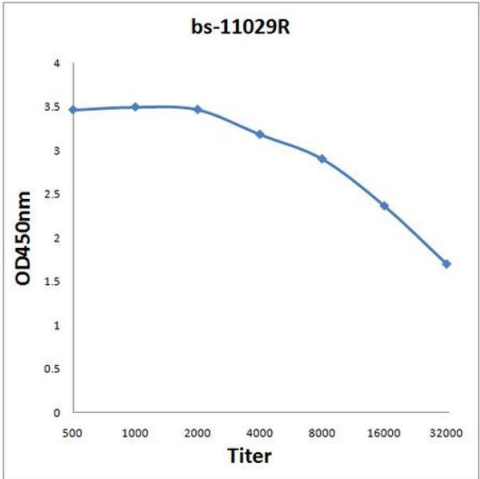
Preservative: ProClin

Precaution of Use: This product contains ProClin: a POISONOUS AND HAZARDOUS SUBSTANCE, which should be handled by trained staff only.

Handling

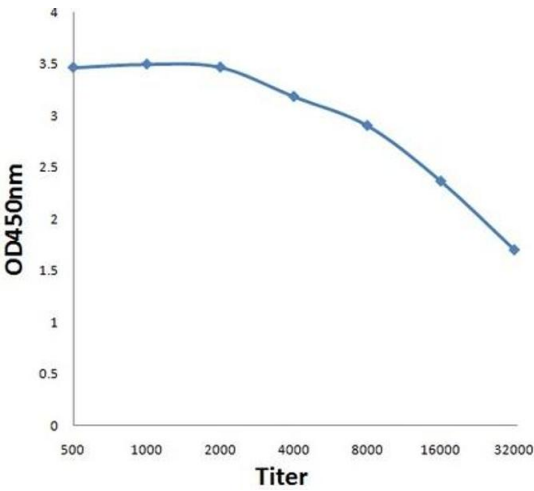
Storage:	4 °C,-20 °C
Storage Comment:	Shipped at 4°C. Store at -20°C for one year. Avoid repeated freeze/thaw cycles.
Expiry Date:	12 months

Images



ELISA

Image 1. Antigen: 0.2 µg/100 µL Primary: Antiserum, 1:500, 1:1000, 1:2000, 1:4000, 1:8000, 1:16000, 1:32000; Secondary: HRP conjugated Goat-Anti-Rabbit IgG at 1: 5000; TMB staining; Read the data in MicroplateReader by 450



ELISA

Image 2. Antigen: 0.2ug/100ul, Primary: Antiserum, 1:500, 1:1000, 1:2000, 1:4000, 1:8000, 1:16000, 1:32000, Secondary: HRP conjugated Goat-Anti-Rabbit IgG at 1: 5000, TMB staining, Read the data in MicroplateReader by 450nm