

Datasheet for ABIN1385618  
**anti-AQP2 antibody (AA 101-200)**[Go to Product page](#)

## 2 Images

## Overview

Quantity:	100 µL
Target:	AQP2
Binding Specificity:	AA 101-200
Reactivity:	Human, Rat, Mouse
Host:	Rabbit
Clonality:	Polyclonal
Conjugate:	This AQP2 antibody is un-conjugated
Application:	Western Blotting (WB), ELISA, Immunofluorescence (Paraffin-embedded Sections) (IF (p)), Immunofluorescence (Cultured Cells) (IF (cc)), Immunocytochemistry (ICC), Immunohistochemistry (Paraffin-embedded Sections) (IHC (p)), Immunohistochemistry (Frozen Sections) (IHC (fro))

## Product Details

Immunogen:	KLH conjugated synthetic peptide derived from human AQP2
Isotype:	IgG
Cross-Reactivity:	Human, Mouse, Rat
Purification:	Purified by Protein A.

## Target Details

Target:	AQP2
Alternative Name:	AQP2 ( <a href="#">AQP2 Products</a> )

## Target Details

Background:	<p>Synonyms: ADH water channel, AQP 2, AQP-2, AQP CD, AQP2, AQPCD, Aquaporin 2 collecting duct, Aquaporin CD, Aquaporin2, Aquaporine 2, Collecting duct water channel protein, MGC34501, Water channel protein for renal collecting duct, WCH CD, WCHCD.</p> <p>Background: This gene encodes a water channel protein located in the kidney collecting tubule. It belongs to the MIP/aquaporin family, some members of which are clustered together on chromosome 12q13. Mutations in this gene have been linked to autosomal dominant, and recessive forms of nephrogenic diabetes insipidus.</p>
Molecular Weight:	30kDa
Gene ID:	84062
UniProt:	<a href="#">P41181</a>
Pathways:	<a href="#">Response to Water Deprivation</a>

## Application Details

Application Notes:	<p>WB 1:300-5000</p> <p>ELISA 1:500-1000</p> <p>IHC-P 1:200-400</p> <p>IHC-F 1:100-500</p> <p>IF(IHC-P) 1:50-200</p> <p>IF(IHC-F) 1:50-200</p> <p>IF(ICC) 1:50-200</p> <p>ICC 1:100-500</p>
Restrictions:	For Research Use only

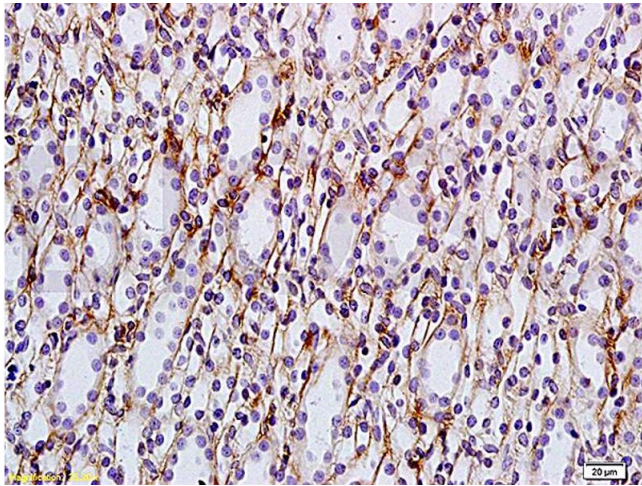
## Handling

Format:	Liquid
Concentration:	1 µg/µL
Buffer:	0.01M TBS( pH 7.4) with 1 % BSA, 0.02 % Proclin300 and 50 % Glycerol.
Preservative:	ProClin
Precaution of Use:	This product contains ProClin: a POISONOUS AND HAZARDOUS SUBSTANCE, which should be handled by trained staff only.
Storage:	4 °C, -20 °C

Handling

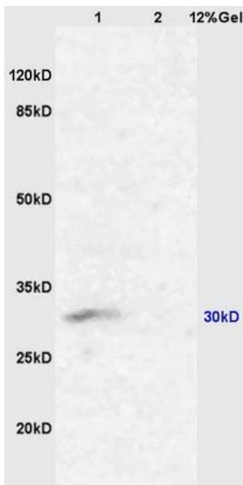
Storage Comment:	Shipped at 4°C. Store at -20°C for one year. Avoid repeated freeze/thaw cycles.
Expiry Date:	12 months

Images



Immunohistochemistry

**Image 1.** Formalin-fixed and paraffin embedded: rat kidney tissue labeled with Anti-AQP-2 Polyclonal Antibody, Unconjugated (ABIN1385618) at 1:200, followed by conjugation to the secondary antibody and DAB staining



SDS-PAGE

**Image 2.** L1 mouse kidney lysates L2 mouse lung lysates probed with Anti AQP2 Polyclonal Antibody, Unconjugated (ABIN1385618) at 1:200 overnight at 4 °C. Followed by conjugation to secondary antibody at 1:3000 for 90 min at 37 °C. Predicted band 30kD. Observed band size:30kD.