

Datasheet for ABIN1385626
anti-RTP3 antibody (AA 21-120)[Go to Product page](#)

1 Image

Overview

Quantity:	100 µL
Target:	RTP3
Binding Specificity:	AA 21-120
Reactivity:	Human
Host:	Rabbit
Clonality:	Polyclonal
Conjugate:	This RTP3 antibody is un-conjugated
Application:	Western Blotting (WB), ELISA, Flow Cytometry (FACS), Immunohistochemistry (Paraffin-embedded Sections) (IHC (p))

Product Details

Immunogen:	KLH conjugated synthetic peptide derived from human RTP3
Isotype:	IgG
Cross-Reactivity:	Human
Predicted Reactivity:	Mouse
Purification:	Purified by Protein A.

Target Details

Target:	RTP3
Alternative Name:	RTP3 (RTP3 Products)

Target Details

Background:	<p>Synonyms: LTM1, Receptor chemosensory transporter protein 3, Receptor transporter protein 3, Receptor-transporting protein 3, RTP3, RTP3_HUMAN, TMEM7, Transmembrane protein 7.</p> <p>Background: Members of the RTP (receptor transporter proteins) family have recently been discovered to influence bitter taste receptor expression in addition to inducing the expression of mammalian odorant receptors. RTP3 is a 232 amino acid single-pass type III membrane protein belonging to the TMEM7 family. Unlike other RTP proteins, RTP3 is not expressed in olfactory neurons but is expressed predominantly in liver. RTP3 is involved in the functional expression of bitter taste receptors and suppresses cell proliferation, and is also found in human circumvallate papillae and testis (regions where bitter taste receptors are expressed). The gene encoding RTP3 maps to human chromosome 3p21.31 within C3CER1 (chromosome 3 common eliminated region 1), which is frequently eliminated in chromosomal deletions of solid tumors.</p>
-------------	---

Application Details

Application Notes:	<p>WB 1:300-5000</p> <p>ELISA 1:500-1000</p> <p>FCM 1:20-100</p> <p>IHC-P 1:200-400</p>
Restrictions:	For Research Use only

Handling

Format:	Liquid
Concentration:	1 µg/µL
Buffer:	0.01M TBS(pH 7.4) with 1 % BSA, 0.02 % Proclin300 and 50 % Glycerol.
Preservative:	ProClin
Precaution of Use:	This product contains ProClin: a POISONOUS AND HAZARDOUS SUBSTANCE, which should be handled by trained staff only.
Storage:	4 °C,-20 °C
Storage Comment:	Shipped at 4°C. Store at -20°C for one year. Avoid repeated freeze/thaw cycles.
Expiry Date:	12 months

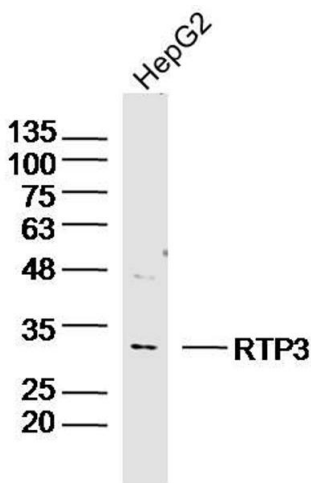


Image 1. Human HepG2 lysates probed with RTP3 Polyclonal Antibody, Unconjugated at 1:300 dilution and 4°C overnight incubation. Followed by conjugated secondary antibody incubation at 1:10000 for 60 min at 37°C.