

Datasheet for ABIN1385715
anti-UBE2Q1 antibody (AA 321-422)[Go to Product page](#)

2 Images

Overview

Quantity:	100 µL
Target:	UBE2Q1
Binding Specificity:	AA 321-422
Reactivity:	Mouse, Rat
Host:	Rabbit
Clonality:	Polyclonal
Conjugate:	This UBE2Q1 antibody is un-conjugated
Application:	Western Blotting (WB), ELISA, Flow Cytometry (FACS), Immunofluorescence (Cultured Cells) (IF (cc)), Immunofluorescence (Paraffin-embedded Sections) (IF (p)), Immunohistochemistry (Paraffin-embedded Sections) (IHC (p)), Immunohistochemistry (Frozen Sections) (IHC (fro))

Product Details

Immunogen:	KLH conjugated synthetic peptide derived from human UBE2Q1
Isotype:	IgG
Cross-Reactivity:	Mouse, Rat
Predicted Reactivity:	Human,Dog,Cow,Sheep,Horse,Rabbit
Purification:	Purified by Protein A.

Target Details

Target:	UBE2Q1
---------	--------

Target Details

Alternative Name:	UBE2Q1 (UBE2Q1 Products)
Background:	<p>Synonyms: Galactosyl transferase associated protein, GTAP, NICE 5, NICE5, PRO3094, Protein NICE 5, Protein NICE-5, UB2Q1_HUMAN, UBE2Q, Ube2q1, Ubiquitin carrier protein Q1, Ubiquitin conjugating enzyme E2 Q1, Ubiquitin conjugating enzyme E2Q putative 1, Ubiquitin conjugating enzyme E2Q 1, Ubiquitin conjugating enzyme E2Q family member 1, Ubiquitin protein ligase Q1, Ubiquitin-conjugating enzyme E2 Q1, Ubiquitin-protein ligase Q1.</p> <p>Background: Ubiquitination involves at least three classes of enzymes: ubiquitin-activating enzymes (UBE1s), ubiquitin-conjugating enzymes (UBE2s), and ubiquitin-protein ligases (UBE3s). When ubiquitin is activated by a UBE1, it is transferred to the cysteine residue on a UBE2. UBE2 then binds a UBE3, which transfers the ubiquitin from the UBE2 cysteine to a lysine residue on the target protein. Ubiquitin-conjugating enzyme E2 Q1 (UBE2Q1), also known as ubiquitin-protein ligase Q1 or ubiquitin carrier protein Q1, is an 422 amino acid protein belonging to the ubiquitin-conjugating enzyme (UBE2) family. Two named isoforms of UBE2Q1 exist as a result of alternative splicing events.</p>
Gene ID:	55585

Application Details

Application Notes:	WB 1:300-5000 ELISA 1:500-1000 FCM 1:20-100 IHC-P 1:200-400 IHC-F 1:100-500 IF(IHC-P) 1:50-200 IF(IHC-F) 1:50-200 IF(ICC) 1:50-200
Restrictions:	For Research Use only

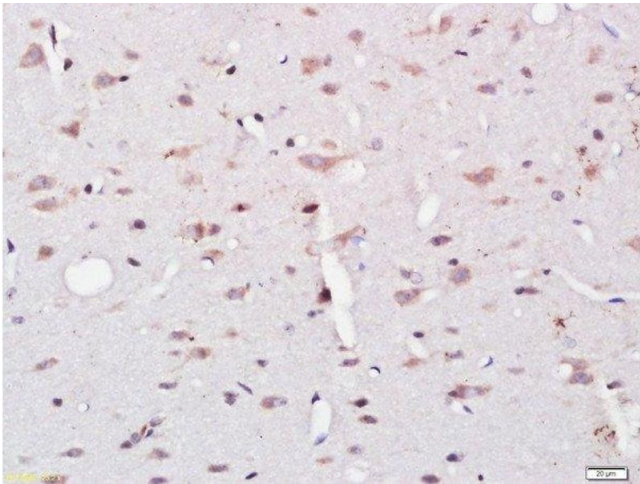
Handling

Format:	Liquid
Concentration:	1 µg/µL
Buffer:	0.01M TBS(pH 7.4) with 1 % BSA, 0.02 % Proclin300 and 50 % Glycerol.
Preservative:	ProClin

Handling

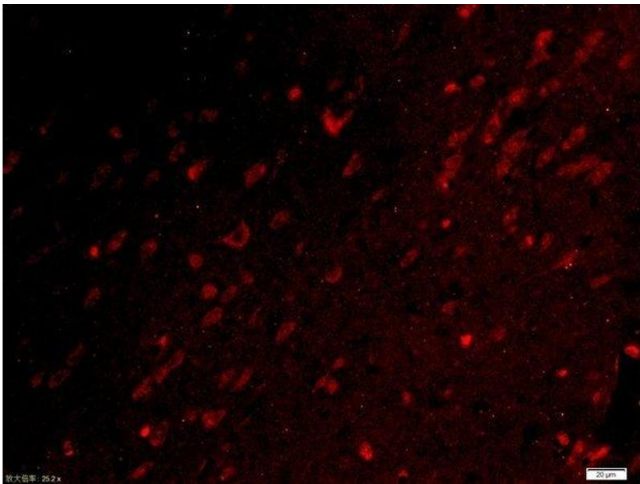
Precaution of Use:	This product contains ProClin: a POISONOUS AND HAZARDOUS SUBSTANCE, which should be handled by trained staff only.
Storage:	4 °C,-20 °C
Storage Comment:	Shipped at 4°C. Store at -20°C for one year. Avoid repeated freeze/thaw cycles.
Expiry Date:	12 months

Images



Immunohistochemistry (Paraffin-embedded Sections)

Image 1. Paraformaldehyde-fixed, paraffin embedded rat brain tissue, Antigen retrieval by boiling in sodium citrate buffer(pH6) for 15min, Block endogenous peroxidase by 3% hydrogen peroxide for 30 minutes, Blocking buffer (normal goat serum) at 37°C for 20min, Antibody incubation with Rabbit Anti-UBE2Q1 Polyclonal Antibody, Unconjugated at 1:500 overnight at 4°C, followed by a conjugated secondary and DAB staining



Immunofluorescence (Paraffin-embedded Sections)

Image 2. Paraformaldehyde-fixed, paraffin embedded rat brain tissue, Antigen retrieval by boiling in sodium citrate buffer(pH6) for 15min, Block endogenous peroxidase by 3% hydrogen peroxide for 30 minutes, Blocking buffer (normal goat serum) at 37°C for 20min, Antibody incubation with Rabbit Anti-UBE2Q1 Polyclonal Antibody, Unconjugated at 1:500 overnight at 4°C, followed by a conjugated secondary and DAPI staining