



[Go to Product page](#)

Datasheet for ABIN1385730

anti-STAU1/Staufen antibody

3 Images

1 Publication

Overview

Quantity:	100 µL
Target:	STAU1/Staufen (STAU1)
Reactivity:	Human, Rat, Mouse
Host:	Rabbit
Clonality:	Polyclonal
Conjugate:	This STAU1/Staufen antibody is un-conjugated
Application:	Western Blotting (WB), Immunofluorescence (Paraffin-embedded Sections) (IF (p)), Immunohistochemistry (Paraffin-embedded Sections) (IHC (p)), Immunofluorescence (Cultured Cells) (IF (cc))

Product Details

Immunogen:	KLH conjugated synthetic peptide derived from human Staufen
Isotype:	IgG
Cross-Reactivity:	Chicken, Horse, Human, Mouse, Rat
Purification:	Purified by Protein A.

Target Details

Target:	STAU1/Staufen (STAU1)
Abstract:	STAU1 Products
Background:	Synonyms: STAU, PPP1R150, Double-stranded RNA-binding protein Staufen homolog 1, STAU1 Background: Binds double-stranded RNA (regardless of the sequence) and tubulin. May play a

Target Details

role in specific positioning of mRNAs at given sites in the cell by cross-linking cytoskeletal and RNA components, and in stimulating their translation at the site.

Gene ID: 6780

UniProt: [O95793](#)

Pathways: [Asymmetric Protein Localization](#)

Application Details

Application Notes: WB 1:100-1000
IHC-P 1:100-500
IF(IHC-P) 1:50-200

Restrictions: For Research Use only

Handling

Format: Liquid

Concentration: 1 µg/µL

Buffer: 0.01M TBS(pH 7.4) with 1 % BSA, 0.02 % Proclin300 and 50 % Glycerol.

Preservative: Sodium azide

Precaution of Use: This product contains Sodium azide: a POISONOUS AND HAZARDOUS SUBSTANCE, which should be handled by trained staff only.

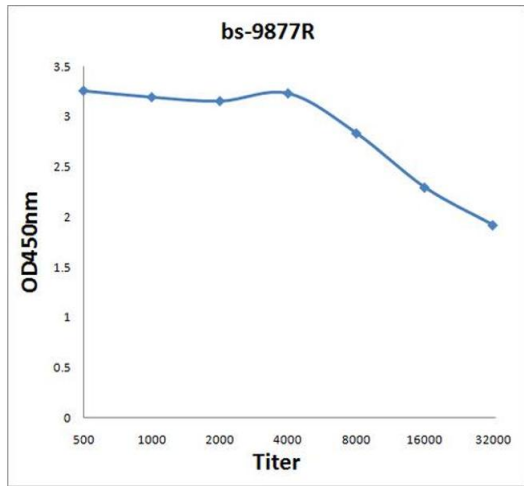
Storage: 4 °C, -20 °C

Storage Comment: Shipped at 4°C. Store at -20°C for one year. Avoid repeated freeze/thaw cycles.

Expiry Date: 12 months

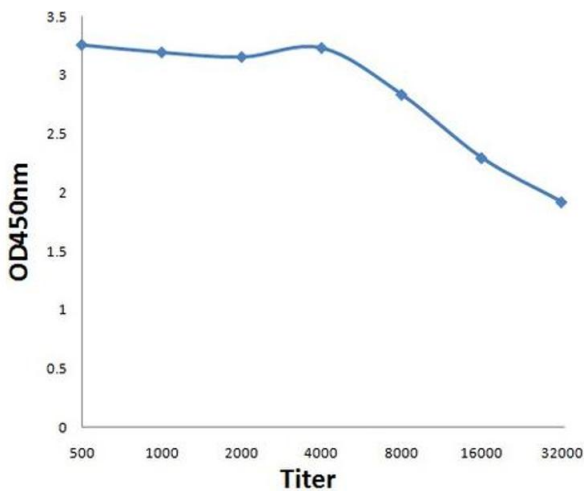
Publications

Product cited in: de Morrée, van Velthoven, Gan, Salvi, Klein, Akimenko, Quarta, Biressi, Rando: "Staufen1 inhibits MyoD translation to actively maintain muscle stem cell quiescence." in: **Proceedings of the National Academy of Sciences of the United States of America**, Vol. 114, Issue 43, pp. E8996-E9005, (2017) ([PubMed](#)).



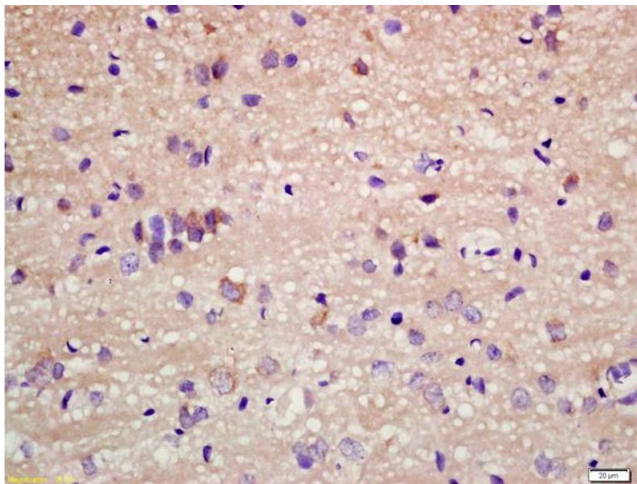
ELISA

Image 1. Antigen: 2 µg/100 µL Primary: Antiserum, 1:500, 1:1000, 1:2000, 1:4000, 1:8000, 1:16000, 1:32000; Secondary: HRP conjugated Rabbit Anti-Goat IgG at 1: 5000; TMB staining Read the data in Microplate Reader by 450nm.



ELISA

Image 2. Antigen: 0.2ug/100ul, Primary: Antiserum, 1:500, 1:1000, 1:2000, 1:4000, 1:8000, 1:16000, 1:32000, Secondary: HRP conjugated Goat-Anti-Rabbit IgG at 1: 5000, TMB staining, Read the data in MicroplateReader by 450nm



Immunohistochemistry

Image 3. Formalin-fixed and paraffin embedded rat brain labeled with Anti-Staufen Polyclonal Antibody, Unconjugated (ABIN1385730) at 1:200 followed by conjugation to the secondary antibody and DAB staining