

Datasheet for ABIN1385735
anti-SATB2 antibody (AA 451-485)

2 Images

[Go to Product page](#)

Overview

Quantity:	100 µL
Target:	SATB2
Binding Specificity:	AA 451-485
Reactivity:	Human, Mouse, Rat
Host:	Rabbit
Clonality:	Polyclonal
Conjugate:	This SATB2 antibody is un-conjugated
Application:	Western Blotting (WB), ELISA, Immunohistochemistry (Paraffin-embedded Sections) (IHC (p)), Flow Cytometry (FACS), Immunocytochemistry (ICC), Immunofluorescence (Paraffin-embedded Sections) (IF (p)), Immunofluorescence (Cultured Cells) (IF (cc)), Immunohistochemistry (Frozen Sections) (IHC (fro))

Product Details

Immunogen:	KLH conjugated synthetic peptide derived from human SATB2
Isotype:	IgG
Cross-Reactivity:	Human, Mouse, Rat
Predicted Reactivity:	Cow, Sheep, Horse
Purification:	Purified by Protein A.

Target Details

Target:	SATB2
---------	-------

Target Details

Alternative Name:	SATB2 (SATB2 Products)
Background:	<p>Synonyms: GLSS, DNA-binding protein SATB2, Special AT-rich sequence-binding protein 2, SATB2, KIAA1034</p> <p>Background: Binds to DNA, at nuclear matrix- or scaffold-associated regions. Thought to recognize the sugar-phosphate structure of double-stranded DNA. Transcription factor controlling nuclear gene expression, by binding to matrix attachment regions (MARs) of DNA and inducing a local chromatin-loop remodeling. Acts as a docking site for several chromatin remodeling enzymes and also by recruiting corepressors (HDACs) or coactivators (HATs) directly to promoters and enhancers. Required for the initiation of the upper-layer neurons (UL1) specific genetic program and for the inactivation of deep-layer neurons (DL) and UL2 specific genes, probably by modulating BCL11B expression. Repressor of Ctip2 and regulatory determinant of corticocortical connections in the developing cerebral cortex. May play an important role in palate formation. Acts as a molecular node in a transcriptional network regulating skeletal development and osteoblast differentiation.</p>
Gene ID:	23314
UniProt:	Q9UPW6

Application Details

Application Notes:	WB 1:300-5000 ELISA 1:500-1000 FCM 1:20-100 IHC-P 1:200-400 IHC-F 1:100-500 IF(IHC-P) 1:50-200 IF(IHC-F) 1:50-200 IF(ICC) 1:50-200 ICC 1:100-500
Restrictions:	For Research Use only

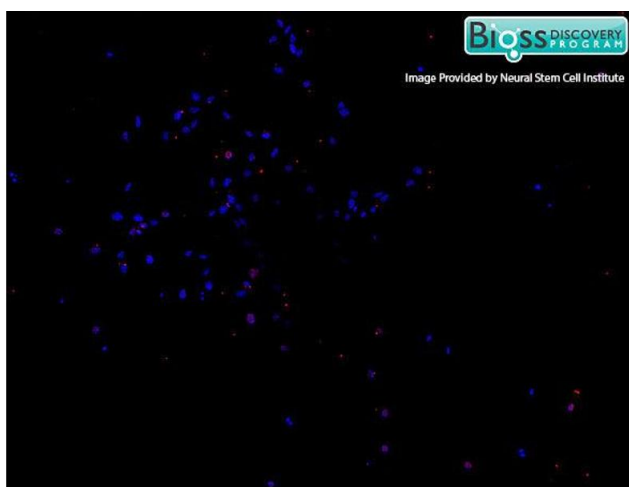
Handling

Format:	Liquid
Concentration:	1 µg/µL
Buffer:	0.01M TBS(pH 7.4) with 1 % BSA, 0.02 % Proclin300 and 50 % Glycerol.

Handling

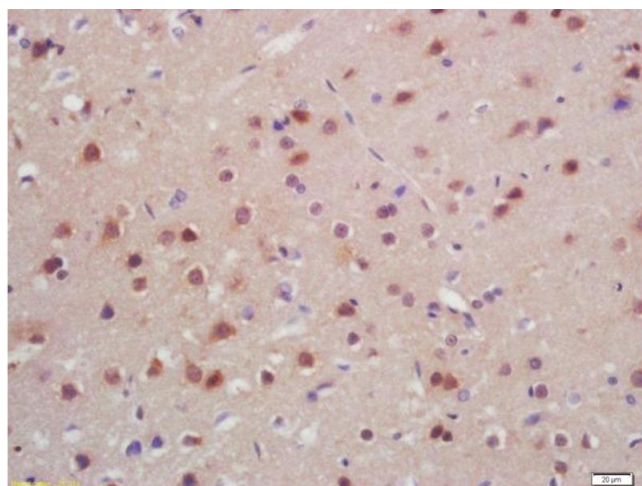
Preservative:	ProClin
Precaution of Use:	This product contains ProClin: a POISONOUS AND HAZARDOUS SUBSTANCE, which should be handled by trained staff only.
Storage:	4 °C,-20 °C
Storage Comment:	Shipped at 4°C. Store at -20°C for one year. Avoid repeated freeze/thaw cycles.
Expiry Date:	12 months

Images



Immunofluorescence

Image 1. Mouse embryonic cortex cells labeled with RABBIT ANTI-SATB2 POLYCLONAL ANTIBODY Polyclonal Antibody, conjugated followed by DAPI staining.



Immunohistochemistry

Image 2. Formalin-fixed and paraffin embedded rat brain labeled with Anti-SATB2 Polyclonal Antibody, Unconjugated (ABIN1385735) at 1:200, followed by conjugation to the secondary antibody and DAB staining